

Filament Guide Port 1.75mm



NarlyB

[VIEW IN BROWSER](#)

updated 12. 4. 2022 | published 28. 12. 2019

Summary

1.75mm Filament Port for 3D print enclosure This was designed for 3/4" Plywood I have included the Fusion 360 file so...

[3D Printers](#) > [Accessories](#)

Tags: [mmu](#) [enclosure](#) [mmu2s](#) [mmu2](#) [port](#)
[filamentguide](#)

1.75mm Filament Port for 3D print enclosure
This was designed for 3/4" Plywood
I have included the Fusion 360 file so you can adjust as needed

I have included the port as a single color print:

- "Filament Guide Port Single Color"
For MMU printing I have include the port as two files:
 - "Filament Guide Port Multi Color_1"
 - "Filament Guide Port Multi Color_2"
- The nut is two colors because I set the print to wipe into the Nut.

Print instructions

Unassociated tags: 1.75mm

Category: 3D Printer Accessories Print Settings

Printer Brand: Prusa

Printer: i3 MK3 MMU 2

Rafts: No

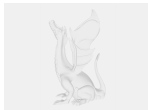
Supports: No

Resolution: 0.15mm QUALITY MK3

Infill: 30%

Filament: PRUSA Prusament PETG Carmine Red & Yellow Gold

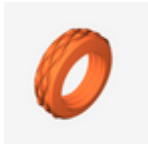
Model files



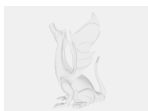
large_display_filament_guide_port_nut_filament_gu.stl



large_display_filament_guide_port_multi_color_2_1.stl



filament_guide_port_nut_filament_guide_port_v8_bo.stl



filament_guide_port.f3d



filament_guide_port__single_color.stl



filament_guide_port_multi_color_2.stl



filament_guide_port_multi_color_1.stl

[Find source .stl files on Thingiverse.com](#)

License ©

This work is licensed under a
Creative Commons (4.0 International License)



Attribution

- ✗ | Sharing without ATTRIBUTION
- ✓ | Remix Culture allowed
- ✓ | Commercial Use
- ✓ | Free Cultural Works
- ✓ | Meets Open Definition