

Spring One Way for Prusament Spool



NarlyB

[VIEW IN BROWSER](#)

updated 12. 4. 2022 | published 28. 12. 2019

Summary

I wanted a spring that was a little more robust for the Prusament Filament Spool.

[3D Printers](#) > [Accessories](#)

Tags: [spool](#) [spring](#) [rewind](#)

I wanted a spring that was a little more robust for the Prusament Filament Spool. I have been inspired By Vincent Groenhuis and his Universal Auto-Rewind Spool Holder. I am using his rewind mechanism and am very grateful for his awesome contribution to the community. This spring is intended to turn only one direction. I have my clutches set to 14. All my clutch mechanisms are printed in PETG as well as this spring. I have included the .STL, Fusion 360 file and .3MF files for single and two color print. I'm using these and they work great for me.

This is designed for the 'D' shaped axle.

Print instructions Category: 3D Printer Accessories Print Settings

Printer Brand: Prusa

Printer: i3 MK3 MMU 2

Rafts: No

Supports: No

Resolution: 0.20mm

Infill: 15%

Filament: Prusament Prusament PETG PrusamentNeon Green Transparent & Galaxy Black

Notes:

For PRUSA i3MK3s MMU2s I verified that first layer Temp was 240 and all other layer temp was 250. The .3MF file for both single and two color is included

Post-Printing

I had one spring bind up causing the spool not to turn.

I could cause it manually by winding the spool.

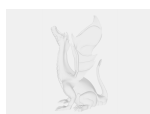
I used 220 sandpaper to lightly go over all surfaces giving a silky feel.

- outside diameter, flats on both sides of spring and corner/edge of flat spring area and outside diameter

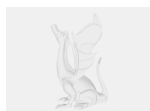
The spring does not even begin to bind now and actually works way better.

I have done this to all the springs pro actively and they are all working great

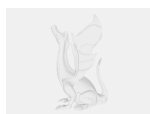
Model files



large_display_spring_one_way_for_prusament_spool.stl



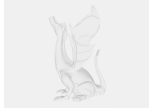
large_display_spring_one_way_for_prusament_spool.stl



large_display_spring_one_way_for_prusament_spool.stl



large_display_spring_one_way_for_prusament_spool.stl



large_display_spring_one_way_for_prusament_spool.stl



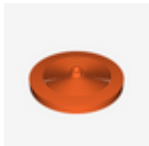
large_display_spring_one_way_for_prusament_spool.stl



large_display_spring_one_way_for_prusament_spool.stl



large_display_spring_one_way_for_prusament_spool.stl



spring_one_way_for_prusament_spool_1_color.3mf



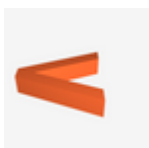
spring_one_way_for_prusament_spool_2_v1_arrow_3_2.stl



spring_one_way_for_prusament_spool_2_v1_arrow_6_2.stl



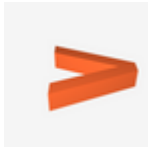
spring_one_way_for_prusament_spool_2_v1_spring_bo.stl



spring_one_way_for_prusament_spool_2_v1_arrow_4_2.stl



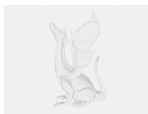
spring_one_way_for_prusament_spool_1_color.stl



spring_one_way_for_prusament_spool_2_v1_arrow_8.stl



spring_one_way_for_prusament_spool_2_v1_arrow_1_2.stl



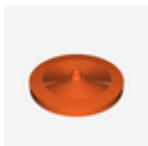
spring_one_way_for_prusament_spool.f3d



spring_one_way_for_prusament_spool_2_v1_arrow_5_2.stl



spring_one_way_for_prusament_spool_2_v1_arrow_7_2.stl



spring_one_way_for_prusament_spool_2_color.3mf



spring_one_way_for_prusament_spool_2_v1_arrow_2_2.stl

[Find source .stl files on Thingiverse.com](https://www.thingiverse.com)

License ©

This work is licensed under a
[Creative Commons \(4.0 International License\)](https://creativecommons.org/licenses/by-sa/4.0/)



Attribution-ShareAlike

- ✘ | Sharing without ATTRIBUTION
- ✓ | Remix Culture allowed
- ✓ | Commercial Use
- ✓ | Free Cultural Works
- ✓ | Meets Open Definition