



## TL-Smoother Plus v1.1 Case (with Lid)

 printaway

[VIEW IN BROWSER](#)

updated 12. 4. 2022 | published 30. 3. 2022

### Summary

A case for the TL-Smoother Plus v1.1 from Trianglelab. This edition of the TL-Smoother has the connectors facing...

[3D Printers](#) > [Accessories](#)

Tags: [tlsruother](#) [tlsruothers](#)

A case for the TL-Smoother Plus v1.1 from Trianglelab.

**BIG WARNING:** Several commenters on Thingiverse reported that this did not fit their TL-Smoother. It appears that Trianglelab did not consistently size their PCBs, so this is unlikely to fit your TL-Smoother. Please feel free to download the .slvs file and edit it yourself to fit yours using [Solvespace](#).

This edition of the TL-Smoother has the connectors facing horizontally, and although there's tons of other TL-Smoother cases on Thingiverse, I couldn't find a single one that matched this new PCB design, so I made my own!

Design considerations:

- The lid is friction fit, and has a 0.5mm tolerance (0.25mm each side). If you print it, it should fit nicely into the bottom of the case.

- The PCBs for the four TL-Smootherers all came scored so they could be snapped and separated, but I didn't separate them. The case fits them in this configuration.
- Integrating the case into your printer design is left as an exercise for the reader. Personally, I'm going to velcro it or glue it to the side of my RAMPS case.

Lastly, I designed the part in [Solvespace](#), and the source files are attached. Solvespace is free, open source, awesome, and easy to use, so I highly recommend it!

Update 2018-03-26: Added .step files by popular demand!

## Print Settings

### Printer:

MendelMax 1.x

### Rafts:

No

### Supports:

Yes

### Resolution:

0.2mm

### Infill:

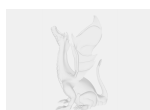
15%

### Notes:

You might be able to print the case without supports, if your printer can bridge well. I did print it with supports though.

Category: 3D Printer Accessories

## Model files



**tl-smoother\_plus\_v11\_case.slvs**

---



**tl-smoother\_plus\_v11\_case.step**

---



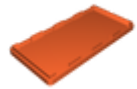
**tl-smoother\_plus\_v11\_case\_lid.step**

---



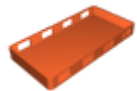
**tl-smoother\_plus\_v11\_case\_lid.slv**

---



**tl-smoother\_plus\_v11\_case\_lid.stl**

---



**tl-smoother\_plus\_v11\_case.stl**

[Find source .stl files on Thingiverse.com](#)

## License

This work is licensed under a  
**Creative Commons (4.0 International License)**



**Attribution-ShareAlike**

---

- ✗ | Sharing without ATTRIBUTION
- ✓ | Remix Culture allowed
- ✓ | Commercial Use
- ✓ | Free Cultural Works
- ✓ | Meets Open Definition