

## Satsana Duct 5015/4010 with support to BLTouch and Pinda inductive probes



clait

[VIEW IN BROWSER](#)

updated 12. 4. 2022 | published 30. 3. 2022

### Summary

Satsana Duct 5015/4010 with support to BLTouch and Pinda inductive probes remix This is a remix of the amazing Satsana...

[3D Printers](#) > [3D Printers - Upgrades](#)

Tags: [pinda](#) [fanduct](#) [ender3](#) [bltouch](#) [bltouchmount](#) [capacitivesensor](#) [satsana5015bltouch](#) [satsanaremix](#) [satsana](#) [pindamount](#)

### Satsana Duct 5015/4010 with support to BLTouch and Pinda inductive probes remix

This is a remix of the amazing [Satsana](#) Ender 3 Fan Duct by eric-anastas and [max\\_davis's remix](#) to support the BLTouch probe.

Main enhancements of my remix:

- Reduced by 1.5mm the height of the BLTouch support, as previously the tip was touching the printed parts

- Added rigidity to the BLTouch support as I thought it was too flexible even when printed at high infills % (and that shouldn't be necessary in the first place)
- Added support converters to hold in place the PINDA inductive sensor in both the M8 and M12 sizes

This remix supports both bowden and direct drive setups and is also compatible with the Microswiss Direct Drive.

Pinda offset:

x -54

y -42

## BOM

- 4x M3 screws are required to hold in place the 4010 fan
- 2x M4 screws are required to hold in place the 5015 fan
- 2x M3 screws and nuts are required for the probe support, with the length depending on your setup

## Print

Follow the same print instructions as the original Satsana Duct.

I printed it at 15% gyroid infill in PETG and found it working great.

## Donations

<https://ko-fi.com/clait>

**tags:** satsana fan duct microswiss microswiss direct drive msdd ender 3 bltouch pinda inductive probe m8 m12

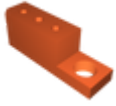
Category: 3D Printer Parts

## Model files



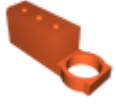
satsana\_5015\_bltouch\_remix\_-15mm.stl

---



**bltouch\_m8\_pinda.stl**

---



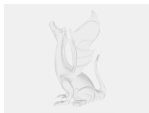
**bltouch\_m12\_pinda.stl**

## Other files



**githubbutton\_sm\_156752.svg**

---



**githubbutton\_sm\_156752.svg**

[Find source .stl files on Thingiverse.com](#)

## License

This work is licensed under a  
**Creative Commons (4.0 International License)**



### **Attribution**

---

- ✗ | Sharing without ATTRIBUTION
- ✓ | Remix Culture allowed
- ✓ | Commercial Use
- ✓ | Free Cultural Works
- ✓ | Meets Open Definition