

Calibration Cube Organizer / Storage Box



clait

[VIEW IN BROWSER](#)

updated 12. 4. 2022 | published 30. 3. 2022

Summary

Calibration Cube Organizer / Storage Box Have you ever wanted more from your calibration cubes? Are you keeping all of...

[Household](#) > [Other House Equipment](#)

Tags: [box](#) [calibration](#) [cube](#) [storage](#) [storagebox](#)
[calibrationcube](#)

Calibration Cube Organizer / Storage Box

Have you ever wanted more from your calibration cubes? Are you keeping all of them? Or do you simply need a storage box?

There you go, here's the **Calibration Cube Organizer!**

Box outside dimension is 100x100mm so it can also be used for actually calibrating your esteps!

Print

Print with 2 perimeters, 5% infill and .2 layer size and you shouldn't have any problems of sort.

There is enough tolerance on the lid to not have any issue with most printers.

Donations

<https://ko-fi.com/clait>

tags: calibration calibration cube organizer storage box storage cube

Print Settings

Printer Brand:

Creality

Printer:

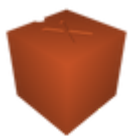
Ender 3 Pro

Category: Containers

Model files

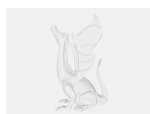


lid.stl

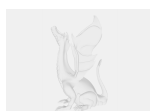


box.stl

Other files



githubbutton_sm_156754.svg



githubbutton_sm_156754.svg

License ©

This work is licensed under a
Creative Commons (4.0 International License)



Attribution—Noncommercial—Share Alike

- ✗ | Sharing without ATTRIBUTION
- ✓ | Remix Culture allowed
- ✗ | Commercial Use
- ✗ | Free Cultural Works
- ✗ | Meets Open Definition