



Mounting Brackets for Monoprice SuperSpeed 7-Port USB-C Hub.

 **WoodenDavid**

[VIEW IN BROWSER](#)

updated 12. 4. 2022 | published 30. 3. 2022

Summary

Brackets to screw a Monoprice SuperSpeed USB-C to 7-port USB3 hub to the underside of my desk. The hub is Monoprice...

[Gadgets](#) > [Computers](#)

Tags: [openscad](#) [usbhub](#) [mountingbracket](#)

Brackets to screw a Monoprice SuperSpeed USB-C to 7-port USB3 hub to the underside of my desk. The hub is Monoprice Product # 14909

I designed it to use #6 1/2" screws, but that's easy to change.

Customizable.

Print Settings

Printer Brand:

Prusa

Printer:

i3 MK3

Supports:

No

Resolution:

0.2mm

Infill:

n/a

Filament:

Amazon Basics PLA

White

Notes:

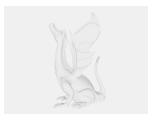
0.4mm nozzle. 0.2mm layer height. It's all wall so infill doesn't matter.

Post-Printing =====

Since the brackets are mirror images of each other, you can have the hub's cord come out either side just by swapping the two brackets.

Category: Computer

Model files



usb_bracket.scad



usb_bracket.stl

[Find source .stl files on Thingiverse.com](#)

License ©

This work is licensed under a
Creative Commons (4.0 International License)



Attribution

- ✗ | Sharing without ATTRIBUTION
- ✓ | Remix Culture allowed
- ✓ | Commercial Use
- ✓ | Free Cultural Works
- ✓ | Meets Open Definition