

Festool Shopvac China Cyclone Hose Adaptors

T Thyn

VIEW IN BROWSER

updated 12. 4. 2022 | published 28. 12. 2019

Summary

This is a set of two hose and pipe adaptors to attach a China cyclone (from eBay) to a Festool shopvac (in my case, a...

[Hobby & Makers](#) > [Tools](#)

Tags: [festool](#) [shopvac](#) [cyclone](#) [systainer](#)

This is a set of two hose and pipe adaptors to attach a China cyclone (from eBay) to a Festool shopvac (in my case, a CTL Mini (up to 2018)).

This also includes a set of attachment parts to mount something onto a systainer or a shopvac with systainer support.

More details on this build can be found at
<http://www.theiling.de/cnc/date/2019-05-26.html>

Print instructions Category: Machine Tools Print Settings

Printer Brand: Prusa

Printer: i3 MK3

Rafts: Doesn't Matter

Supports: Doesn't Matter

Resolution: 0.2mm

Infill: 20%

Notes:

The hose adapters are adjusted for ABS printing with 0.7% shrink rate and a 0.2mm squish-out of the printer. This was done because the adapters rely on a snug friction fit to attach to the shopvac and the hose.

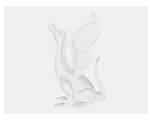
Model files



cyclonefootfl.stl



cyclonelockknob.stl



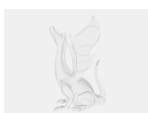
cyclonefootfr.scad



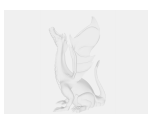
cyclonevacpipe.stl



cyclonefootfr.stl



cyclonevacpipe.scad



cyclonefootbr.scad



cyclonelockknob.scad



cyclonefootbr.stl



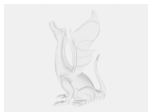
cyclonecyclhose.scad



cyclonefootbl.stl



cyclonefootbl.scad



cyclonefootfl.scad



cyclonecyclhose.stl

[Find source .stl files on Thingiverse.com](https://www.thingiverse.com)

License ©

This work is licensed under a
GNU



General Public License v2.0

- ✗ | Sharing without ATTRIBUTION
- ✓ | Remix Culture allowed
- ✓ | Commercial Use

- ✓ | Meets Open Definition
- i | Share under the same license