



Mobius Camera Mounts.



Airwaves Ted

[VIEW IN BROWSER](#)

updated 12. 4. 2022 | published 30. 3. 2022

Summary

Simple Mobius camera mounts in 10°, 15°, 20°, 25°, and 30° flavours. Camera is a snug push fit into mount but for a...

[Hobby & Makers](#) > [RC & Robotics](#)

Tags: [quad](#) [quadcopter](#) [miniquad](#) [quadcopterframe](#) [mobius](#)
[mobiuscamera](#) [mobiusmount](#)

Simple Mobius camera mounts in 10°, 15°, 20°, 25°, and 30° flavours.

Camera is a snug push fit into mount but for a bit of added security the mount allows a rubber band to be used to squeeze the top together.

Print Settings

Printer:

Anycubic i3 mega ultrabase

Rafts:

No

Supports:

No

Resolution:

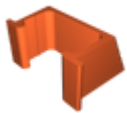
0.2mm

Infill:

10% plus

Category: R/C Vehicles

Model files



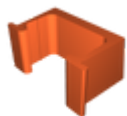
mobius_mount_25_deg.stl



mobius_mount_15_deg.stl



mobius_mount_20_deg.stl



mobius_mount_10_deg_v1.stl



mobius_mount_30_deg.stl

[Find source .stl files on Thingiverse.com](#)

License ©

This work is licensed under a
Creative Commons (4.0 International License)



Attribution

- ✗ | Sharing without ATTRIBUTION
- ✓ | Remix Culture allowed
- ✓ | Commercial Use
- ✓ | Free Cultural Works
- ✓ | Meets Open Definition