

Huxley of Theseus



joo

[VIEW IN BROWSER](#)

updated 12. 4. 2022 | published 30. 3. 2022

Summary

Buildvolume 150x150x200; laser cuttable on a 400x300mm laser cutter
Backstory: Basically this is the end result of me...

[3D Printers](#) > [Accessories](#)

Tags: [reprap](#) [huxley](#) [sketchup](#) [reprappro](#) [theseus](#)
[reprapprohuxley](#) [emaker](#)

Buildvolume 150x150x200; laser cuttable on a 400x300mm laser cutter

Backstory: Basically this is the end result of me constantly updating my printer:

2011 - reprap huxley kit form eMaker

2012 - update stepper drivers and 2560 Atmega

2013 - updated heatbed/X-axis

2016 - change from the huxley frame to the first iteration lasercut wood case (ultimaker style)

2017 - change from the original motors and extruder to nema 17; E3D lite and self printed extruder

2018 - iterative model updates

2019 - finally releasing these files

Like with the ship of Theseus this 'eMaker Huxley' changed piece by piece from the original printer to basically a complete new design. As of 2019 only the smooth rods, the power supply and the Sanuginololu-board are from the initial printer and basically none of the Sanguinololu parts are original.

The Files are provided as is! The STLs are the hopefully the newest iterations, but please check via the SketchUp file for the assembly. Also none of the laser cut files are yet exportet, since all the files i already done are inconsistant, while the skethup file is the most current. Please see <https://www.thingiverse.com/thing:845> on how to use the plugin to export the laser cut files.

Plugins used:

STL import/export

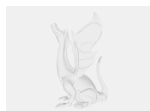
FlightOfIdeas SVG plugin <https://github.com/JoakimSoderberg/sketchup-svg-outline-plugin>

Specialized parts used:

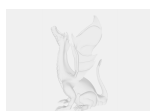
- Bronze bushings 6mm ID 9mm OD for X/Y assembly
- 8x12x30mm bronze bushing for Z-Rods
- For extruder: Ultimaker style knurled drive gear
- 6mm and 6mm smoothrods
- Lots of metric M3 hardware (nuts/bolts), some parts need to be tapped!

Category: 3D Printers

Model files



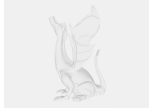
large_display_rollholder_156992.stl



large_display_zbracket_156992.stl



large_display_extruder_156992.stl



large_display_z-chassisx_156992.stl



nema14to17adapter.stl



pulleys.stl



z-chassis.stl



rollholder.stl



zbracket.stl



extruder.stl



huxoftheseus.skp



hotendholdex.stl

License ©

This work is licensed under a
Creative Commons (4.0 International License)



Attribution

- ✗ | Sharing without ATTRIBUTION
- ✓ | Remix Culture allowed
- ✓ | Commercial Use
- ✓ | Free Cultural Works
- ✓ | Meets Open Definition