



window handle extender



joo

[VIEW IN BROWSER](#)

updated 12. 4. 2022 | published 30. 3. 2022

Summary

Can't reach a window handle because of deep tables filled with junk or bulky tools? The window handle extender is the...

[Hobby & Makers](#) > [Tools](#)

Tags: [window](#) [handle](#) [accessibility](#) [animated](#) [extender](#)
[extension](#) [grab](#) [grabber](#) [gif](#) [accessability](#) [donotcare](#)
[woanimated](#)

Can't reach a window handle because of deep tables filled with junk or bulky tools? The window handle extender is the tool you need!

How it works Instructions

Parts needed:

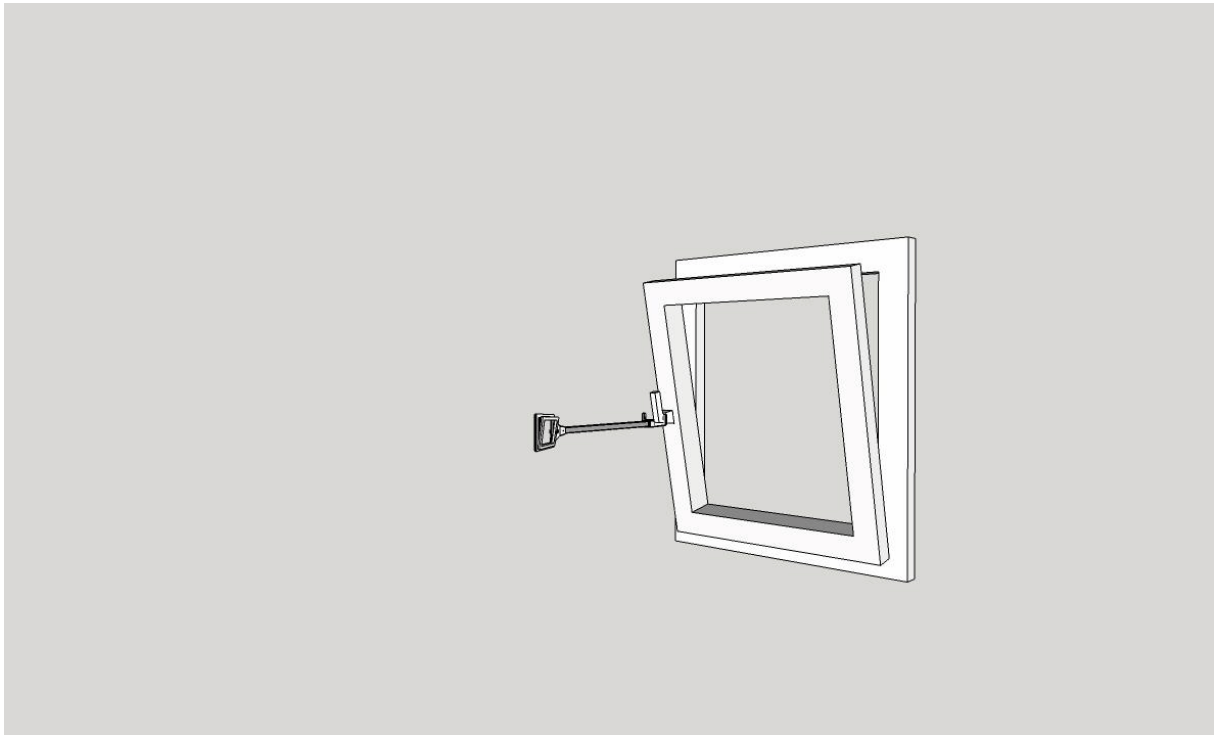
20mm aluminium tubing/profile, ~500mm long

2x 30mm M4 screws

2x M4 nut (Nyloc if available)

- Print the handle parts with support material, base can print without. I would suggest 50% infill

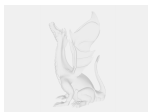
- The handle parts each have two holes for 1.75mm filament pieces to use as registration pins when gluing
- After gluing the handles, assemble the parts to mark the drill spots
- Drill with 4.5 mm drill and screw everything together



because recursion

Category: Hand Tools

Model files



window.skp



windowgrabber_base.stl



windowgrabber_grip-l.stl



windowgrabber_grip-r.stl

[Find source .stl files on Thingiverse.com](#)

License ©

This work is licensed under a
Creative Commons (4.0 International License)



Attribution

- ✗ | Sharing without ATTRIBUTION
- ✓ | Remix Culture allowed
- ✓ | Commercial Use
- ✓ | Free Cultural Works
- ✓ | Meets Open Definition