



RetroPi TV



joo

VIEW IN BROWSER

updated 12. 4. 2022 | published 30. 3. 2022

Summary

For the use with a nintendo pi: a mod for a cheap chinese 3.5" LCD like...

[Gadgets](#) > [Other Gadgets](#)

Tags: [nintendo](#) [retro](#) [raspberrypi](#) [lcd](#) [nes](#) [hotglue](#) [tft](#)
[retropie](#)

For the use with a nintendo pi: a mod for a cheap chinese 3.5" LCD like these: <http://www.aliexpress.com/item/New-3-5-flip-down-Car-LCD-Monitor-2ch-video-input-RearView-Camera-DVD-VCR-CCTV/642399875.html>

(the ebay one i bought isn't available anymore but looks the same)

The frame is lasercut stained birch

I won't describe many details since it's pretty much a hack using way too much hot-glue. Some 3D printed features are not used or misused, best is to take the sketchupfile and modify it to your specific needs.

Category: Video Games

Model files



switch.stl



feet.stl



back.stl



mini_tv.skp

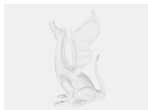


crt_frame.stl

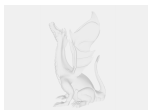


body.stl

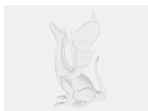
Other files



sources.txt



speaker.pdf



woodframe.pdf

License ©

This work is licensed under a
Creative Commons (4.0 International License)



Attribution

- ✗ | Sharing without ATTRIBUTION
- ✓ | Remix Culture allowed
- ✓ | Commercial Use
- ✓ | Free Cultural Works
- ✓ | Meets Open Definition