

chimera+ watercooled mount



Zi-vo

[VIEW IN BROWSER](#)

updated 12. 4. 2022 | published 30. 3. 2022

Summary

This is a remix for the BLV mgn Cube. Some Parts of the X-Carriage are changed to mount a chimera+ watercooled...

[3D Printers](#) > [3D Printers - Upgrades](#)

Tags: [hotend](#) [chimera](#) [remix](#) [watercooling](#) [hotendmount](#)
[blvmgncube](#) [blvmod](#) [blv](#) [blvcube](#) [blvmgn](#) [blvmgmcube](#)
[chimeramount](#) [chimeraclone](#) [chimerabacket](#)
[chimerawatercooled](#)

This is a remix for the BLV mgn Cube.

Some Parts of the X-Carriage are changed to mount a chimera+ watercooled version. You have to reprint the Rear Plate, the Front Plate, the Bottom and the Twin Blower Shield. Everything is kept quiet close to bens design. The height of the nozzles is not changed, the IR sensor is moved to the Bottom, but also kept at the same height. Therefore you have to change the Position in the config and the probing points.

The twin fan shield ist the main feature of this remix. Its smaler and more lightweight than the original version from Ben. The airflow is optimized for two nozzles and works great. Inside are surfaces to fit some leds, just for

the show. On the outside there are some design elements, that are supposed to cover the screws.

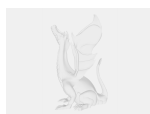
at this point there is no support for different probes.

Pictures will be revised.

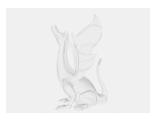
This whole thing works out pretty well for me, so have fun.

Category: 3D Printer Parts

Model files



large_display_block__shield-twin_fan_157030.stl



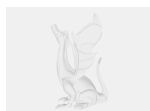
large_display_x_carriage-rear_plate_157030.stl



block__shield-twin_fan.stl



x_carriage-bottom.stl



block__shield-covers.step



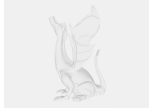
x_carriage-rear_plate.stl



x_carriage-front_plate.step



x_carriage-bottom.step



block_shield-twin_fan.step



x_carriage-rear_plate.step



x_carriage-front_plate.stl

[Find source .stl files on Thingiverse.com](#)

License ©

This work is licensed under a
Creative Commons (4.0 International License)



Attribution

- ✗ | Sharing without ATTRIBUTION
- ✓ | Remix Culture allowed
- ✓ | Commercial Use
- ✓ | Free Cultural Works
- ✓ | Meets Open Definition