



## Uno card caddy



pixel2

[VIEW IN BROWSER](#)

updated 2. 4. 2024 | published 2. 4. 2024

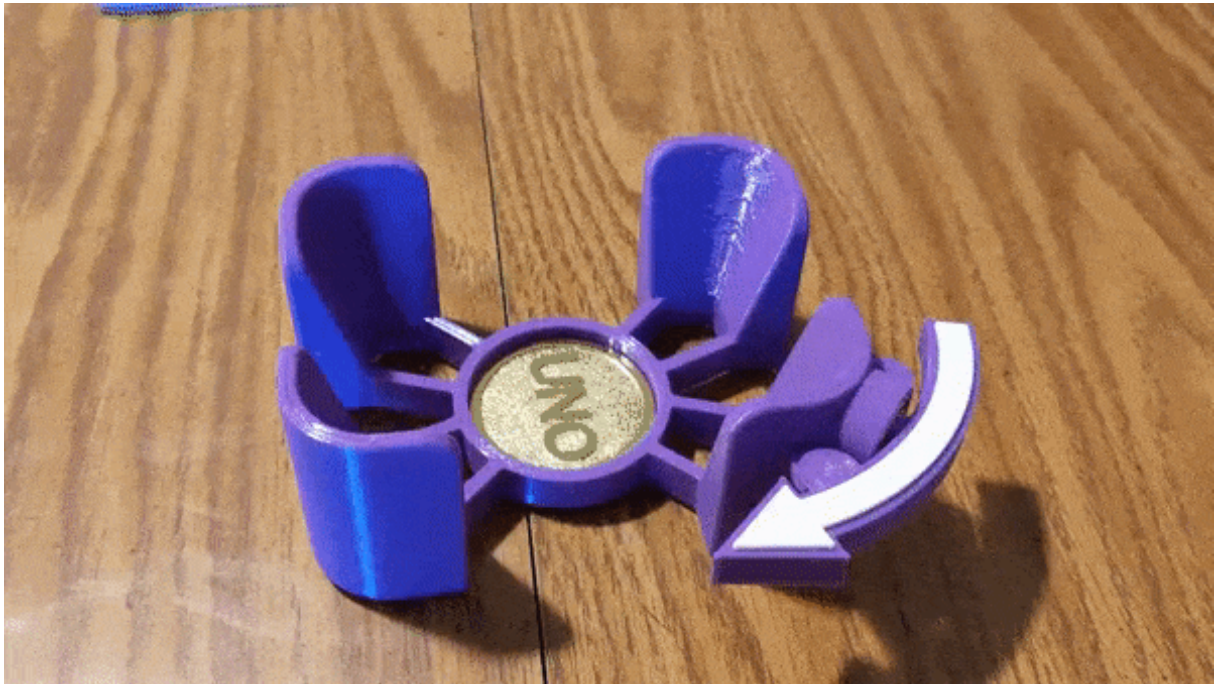
### Summary

Uno card caddy. Keep the discard pile tidy. No more forgetting which direction the action...

[Toys & Games](#) > [Board Games](#)

Tags: [uno](#) [thingiverse](#)

Uno card caddy. Keep the discard pile tidy. No more forgetting which direction the action is going. Wrap with a rubber band to store cards when not in use.



Update Feb2022: Optional dealer dial. We are getting old and our brains don't work like they used to. Five people can't remember who dealt the last hand [the weed is not helping]. Glue/screw the mount on and pop in the dial.

What you need for the full experience:

1 X 688 bearing 8x16x5mm

3 X magnets 9x1.5mm

4 X stem bumpers

superglue/epoxy

Cementall/plaster of paris

## **Print Settings**

**Supports:** Yes

**Resolution:** .2

set wall count to 15 so everything prints solid

create "pause at layer" gcode to insert the magnets in the caddy and arrow. Use a sharpie to mark correct polarity.

Only the arrow needs a little support.

## Post-Printing

Insert the stem bumpers into the base

Mix up Cementall/plaster of paris and pour into the upside down base.

Glue the 2 filler pieces in the arrow

Glue the bearing to the base

Glue the arrow in the bearing

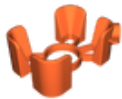
## This remix is based on



**Uno card caddy**

by pixel2

## Model files



**uno\_caddy.stl**



**uno\_arrow.stl**



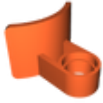
**uno\_filler\_01.stl**



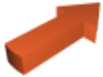
**uno\_filler\_02.stl**



**dealer\_dial.stl**



**dealer\_bracket.stl**



**dealer\_fill.stl**

[Find source .stl files on Thingiverse.com](#)

## License ©



This work is licensed under a  
[Creative Commons \(4.0 International License\)](#)

**Attribution-NonCommercial**

- 
- ✖ | Sharing without ATTRIBUTION
  - ✓ | Remix Culture allowed
  - ✖ | Commercial Use
  - ✖ | Free Cultural Works
  - ✖ | Meets Open Definition