

small Servomotor



Jakob Kerber

[VIEW IN BROWSER](#)

updated 30. 3. 2022 | published 30. 3. 2022

Summary

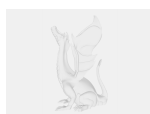
A model of a small servomotor, I use it as reference when modeling, could be used to print and do a fit check and render

[Hobby & Makers](#) > [Electronics](#)

Tags: [rc](#) [model](#) [arduino](#) [electronics](#) [servo](#) [pwm](#) [rccar](#)

This is a model of the, I guess classic, Servomotor for model building. To see the measurements, I put a picture down below. I would recommend it to be used as a reference when designing anything with it. It can also be printed rather easily to do fit checks. Also, it should be high enough quality for any rendering, just extend the cables as you need.

Model files



servo-v2.step

License

This work is licensed under a
Creative Commons (International License)



Public Domain

- ✓ | Sharing without ATTRIBUTION
- ✓ | Remix Culture allowed
- ✓ | Commercial Use
- ✓ | Free Cultural Works
- ✓ | Meets Open Definition