

## B'Struder Modded Support 15 Degree Angle



loidolt

[VIEW IN BROWSER](#)

updated 12. 4. 2022 | published 30. 3. 2022

### Summary

B'Struder Remix. As I am using this attached to one of the vertical 2020 extrusions on my machines, I wanted to have...

---

[3D Printers](#) > [3D Printers - Upgrades](#)

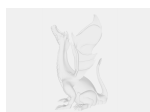
---

B'Struder Remix. As I am using this attached to one of the vertical 2020 extrusions on my machines, I wanted to have little angle on the plate so the bowden tube is angled away from the carriages. This keeps the bowden (and on my machine, bundled electronics wires) away from the moving carriage to prevent snags and arm strikes.

Excellent extruder design, really loving it so far! Highly recommend.

Category: 3D Printer Extruders

### Model files



**bstruder2020plate15deg.skp**

---



**bstruder2020plate15deg.stl**

## Other files



**sources.txt**

[Find source .stl files on Thingiverse.com](#)

## License

This work is licensed under a  
**Creative Commons (4.0 International License)**



### **Attribution**

- 
- ✗ | Sharing without ATTRIBUTION
  - ✓ | Remix Culture allowed
  - ✓ | Commercial Use
  - ✓ | Free Cultural Works
  - ✓ | Meets Open Definition