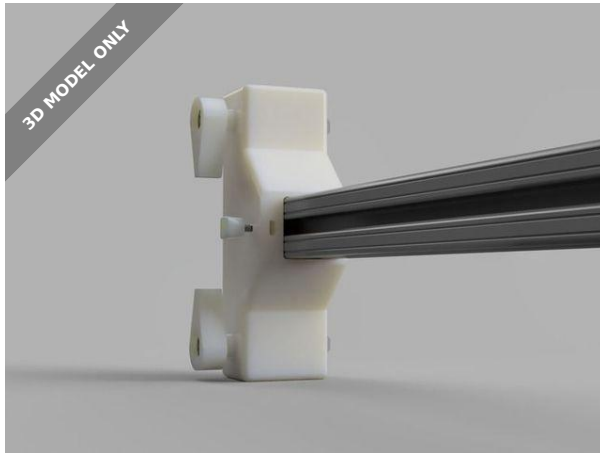


3D MODEL ONLY



Camera bar with Quick Connect



Core3D.tech

[VIEW IN BROWSER](#)

updated 12. 4. 2022 | published 30. 3. 2022

Summary

Designed this camera to connect multiply cameras at different angles onto my C3Dt/bd printer. I designed it with a...

[3D Printers](#) > [Accessories](#)

Designed this camera to connect multiply cameras at different angles onto my C3Dt/bd printer. I designed it with a Quick connect mechanism so I can move and remove this without the need for tools.

The Quick connect mechanism parts:

1/4" bolt (2 inch long) ACE Hardware

Spring (1 inch) #126 ACE Hardware

M6 T-nut [Amazon](https://www.amazon.com/gp/product/B077Z2HX42/ref=as_li_ss_tl?ie=UTF8&psc=1&linkCode=s11&tag=instruct03-20&linkId=9224f6afb5def8d37d5afe0c) [https://www.amazon.com/gp/product/B077Z2HX42/ref=as_li_ss_tl?](https://www.amazon.com/gp/product/B077Z2HX42/ref=as_li_ss_tl?ie=UTF8&psc=1&linkCode=s11&tag=instruct03-20&linkId=9224f6afb5def8d37d5afe0c)

[ie=UTF8&psc=1&linkCode=s11&tag=instruct03-20&linkId=9224f6afb5def8d37d5afe0c](https://www.amazon.com/gp/product/B077Z2HX42/ref=as_li_ss_tl?ie=UTF8&psc=1&linkCode=s11&tag=instruct03-20&linkId=9224f6afb5def8d37d5afe0c)

GrabCad: <https://grabcad.com/library/camera-bar-with-quick-connect-1>

See how it works here: <https://youtu.be/hXjf6lnX0hw>

Print Settings

Printer:

C3Dt/bd

Rafts:

No

Supports:

Yes

Resolution:

0.18

Infill:

20%

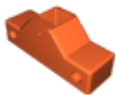
Filament:

any PLA, ABS & PETG Category: 3D Printer Accessories

Model files



quick_connect_knob.stl



extrusion_clamp.stl



knob_v1.stl

[Find source .stl files on Thingiverse.com](#)

License ©

This work is licensed under a
Creative Commons (4.0 International License)



Attribution

- ✗ | Sharing without ATTRIBUTION
- ✓ | Remix Culture allowed
- ✓ | Commercial Use
- ✓ | Free Cultural Works
- ✓ | Meets Open Definition