

Cantilever 3D Printer



Core3D.tech

[VIEW IN BROWSER](#)

updated 12. 4. 2022 | published 30. 3. 2022

Summary

Low budget Cantilever 3D printer build a top of Netgear case holding KFB2.0 controller board. full instructions and...

[3D Printers](#) > [Accessories](#)

Tags: [3dprinter](#) [80201010](#) [cantilever](#) [80203030](#)

Low budget Cantilever 3D printer build a top of Netgear case holding KFB2.0 controller board.

full instructions and material list can be found at <https://www.instructables.com/id/3D-Printer-Cantilever/>

All 3D printed items can be found as STL files attached.

If you like what you see and wish to download, please consider pushing the Tip Designer Button. If you want to see more coming your way, consider supporting me though https://www.patreon.com/Core3d_tech

Print Settings

Printer:

Custom printer Core XY

Rafts:

No

Supports:

No

Resolution:

0.2mm

Infill:

25%

Notes:

Other than the Hot-end bracket which was printed using ABS, printed using PLA

How I Designed This =====

Designed bottom up using Fusion 360

Category: 3D Printers

Model files



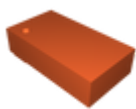
nemacapbackmirror.stl



endstopcasez.stl



linearadapterz.stl



endstopcasex.stl



endstopzwheelbottom.stl



extruderbracket.stl



bodyclamp.stl



hotendadapter_needssupport.stl



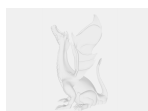
endstopcases_all_printerbed_aligned.stl



motherboardbracket.stl



linearadapters_all_printerbed_aligned.stl



bedframe.stl



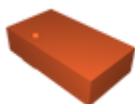
endstopzwheeltop.stl



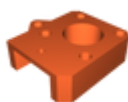
bodyclamps_all_printerbed_aligned.stl



hotendbracket.stl



endstopcasey.stl



nemacapfrontmirror.stl



bodyclamp_2.stl



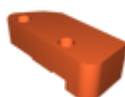
linearadaptertensionclip.stl



lcdcase.stl



idlercapback_mirror.stl



idlercapfront_mirror.stl



nemacapbackmirror_all_printerbed_aligned.stl



adjustableendstopwheel.stl



idlercapsmirror_all_printerbed_aligned.stl



linearadaptery.stl

[Find source .stl files on Thingiverse.com](#)

License

This work is licensed under a
[Creative Commons \(4.0 International License\)](#)



Attribution

-
- ✗ | Sharing without ATTRIBUTION
 - ✓ | Remix Culture allowed
 - ✓ | Commercial Use
 - ✓ | Free Cultural Works
 - ✓ | Meets Open Definition