

## Printrbot LC v1 Replacement Foot



losaef the Irascible

[VIEW IN BROWSER](#)

updated 12. 4. 2022 | published 30. 3. 2022

### Summary

My Printrbot LC v1 has a storied history, including printing its own repair parts when it arrived from the eBay seller...

---

[3D Printers](#) > [3D Printers - Upgrades](#)

---

My Printrbot LC v1 has a storied history, including printing its own repair parts when it arrived from the eBay seller (in a nearly empty cardboard box) in less than intact condition.

This corrects the last long-standing problem with it, that its right foot was completely shattered and unusable to prop the printer up.

Since these leave the printer sitting a few millimeters higher than the stock feet, I recommend printing two pairs, and replacing both sides to keep the printer level.

These are also merely press-fit. While they fit snugly enough that I don't expect them to fall off in normal usage, you may want to keep this in mind if you lift your printer off of the table often.

Created at 2am using OpenSCAD, sliced with Slic3r, and printed using OctoPrint.

Open Source Wins!

## Print Settings

### Printer Brand:

Solidoodle

### Printer:

Solidoodle 4

### Rafts:

No

### Supports:

No

### Resolution:

0.1976mm

### Infill:

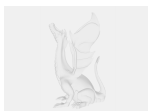
20%

### Notes:

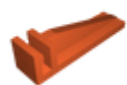
This was designed for the ever so slight overextrusion that my SD4 delivers. As such, while the caliper measured the wood thickness at 5.80mm, The 6mm slots in the printed part fit perfectly. Your mileage may vary.

Category: 3D Printer Parts

## Model files



**pbot-foot.scad**



**pbot-foot.stl**

[Find source .stl files on Thingiverse.com](#)

# License

This work is licensed under a  
**Creative Commons (4.0 International License)**



**Attribution-ShareAlike**

---

- ✗ | Sharing without ATTRIBUTION
- ✓ | Remix Culture allowed
- ✓ | Commercial Use
- ✓ | Free Cultural Works
- ✓ | Meets Open Definition