



Complete Giant Dice Set

bobmakes **bobmakes**

[VIEW IN BROWSER](#)

updated 2. 1. 2023 | published 2. 1. 2023

Summary

For that boss battle, or make-or-break roll, these Giant Dice are sure to make your games extra fun!



21.37 hrs



8 pcs



0.20 mm



0.40 mm



PLA



217 g



Prusa MINI /
MINI+

[Toys & Games](#) > [Board Games](#)

Tags: [dnd](#) [dungeons](#) [dragons](#) [dice](#) [and](#) [d20](#) [d6](#)
[d10](#) [d12](#) [d4](#) [d8](#) [dies](#)

Inspired by my Chessex dice set, I modeled all of the dies to scale, and featured the easily printable font Comic Sans. The dice are sized to easily print on any reasonably sized printer. Printing them at 100% infill, they are so fun to roll.







Have fun and print them in different colours and even fill in the recessed numbers with enamel paint!

Certain bobmakes designs are protected by Copyright Law. When you download, you do NOT have the right to sell any digital file or printed model of my designs without my explicit written consent.

To legally sell prints, you may obtain my permission through this link:
<https://www.patreon.com/user/membership?u=85226150>

Please help support the creative work of each 3D artist and NEVER sell their digital files or prints without permission.

Model files

STL Files		8 files
	d4.stl	
	d6.stl	
	d8.stl	
	d10.stl	
	d10.stl	
	d12.stl	



d12-stepdown.stl



d20.stl

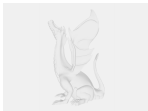


STEP Files - No Markings

6 files



d4.step



d6.step



d8.step



d10.step



d12.step

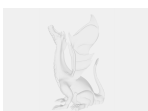


d20.step



Solidworks Files - No Markings

7 files



d4.sldprt



d6.sldprt



d8.sldprt



d10.sldprt



d10.sldprt



d12.sldprt



d20.sldprt

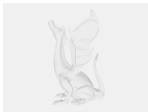


Solidworks Files - Numbered

8 files



d4.sldprt



d6.sldprt



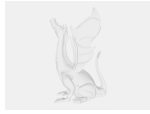
d8.sldprt



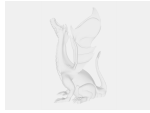
d10.sldprt



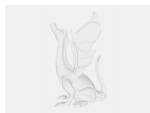
d10.sldprt



d12.sldprt



d12-stepdown.sldprt



d20.sldprt

Print files



gcode Files (Prusa MINI)

8 files



opm_d4.gcode

🌀 PLA 📏 0.40 mm 📏 0.20 mm ⌚ 1.65 hrs ⚖️ 14 g



opm_d6.gcode

🌀 PLA 📏 0.40 mm 📏 0.20 mm ⌚ 2.53 hrs ⚖️ 26 g



opm_d8.gcode

🌀 PLA 📏 0.40 mm 📏 0.20 mm ⌚ 2.00 hrs ⚖️ 21 g



opm_d10.gcode

🌀 PLA 📏 0.40 mm 📏 0.20 mm ⌚ 2.77 hrs ⚖️ 28 g



opm_d10.gcode

🌀 PLA 📏 0.40 mm 📏 0.20 mm ⌚ 3.23 hrs ⚖️ 31 g



opm_d12.gcode

🌀 PLA 📏 0.40 mm 📏 0.20 mm ⌚ 2.97 hrs ⚖️ 32 g



opm_d12-spindown.gcode

🌀 PLA 📏 0.40 mm 📏 0.20 mm ⌚ 3.00 hrs ⚖️ 32 g



opm_d20.gcode

🌀 PLA 📏 0.40 mm 📏 0.20 mm ⌚ 3.22 hrs ⚖️ 33 g

Other files



Templates

1 file



d12-spindown.pdf

License ©

This work is licensed under a
[Creative Commons \(4.0 International License\)](#)

Attribution-NonCommercial



- ✗ | Sharing without ATTRIBUTION
- ✓ | Remix Culture allowed
- ✗ | Commercial Use
- ✗ | Free Cultural Works
- ✗ | Meets Open Definition