



Monopoly houses and vehicles upgrade



Elias Braun

[VIEW IN BROWSER](#)

updated 30. 4. 2022 | published 30. 4. 2022

Summary

Are you bored by the simple look of the basic monopoly game? This set contains upgrade pieces to make your game special.

[Toys & Games](#) > [Board Games](#)

Tags: [prague](#) [boardgames](#) [tokens](#) [monopoly](#)

The set is made as an upgrade for the standard monopoly game. It contains 4 game pieces along with 3 different types of houses and 6 different hotels. These are based on the buildings located in the city of Prague (Czech republic). The game pieces represent four different types of public transport vehicles - a normal tram, a historical tram, a subway car and a bus. These can be printed with color changes to achieve a prototypical paint scheme. I recommend a higher layer resolution (at least 0.1mm). The houses are designed to be printed in larger batches (11 pieces - the standard monopoly game comes with 32 houses, this way you will have 33). Because of this, they have a small amount of detail, and they can be printed with a higher layer height. I recommend to implement a color change to make the roofs green, so you can still recognize them as a normal house and don't mistake them for a hotel. The hotels are represented by 6 different famous or important buildings in Prague, like for example Prusa lab or the Municipal house. A color change was implemented here as well to make them recognizable as hotels (the roofs

are now red). I hope you will have a good time making these and a even better time playing the finished game.

Print instructions

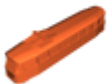

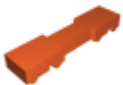
t3_tram, Old_tram, Subway, Bus: print at 0.1 mm layer height or lower, as the models contain a large amount of small details. A brim may also be needed.

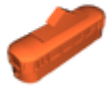
Houses (1,2,3): Print at up to 0.2 mm layer height. If you print in larger quantities, a brim will be (almost certainly) required.

Hotels (Dancing house, Municipal house, Prusa lab, Faculty of law, Kotva shopping centre, National theatre): Print at up to 0.2mm layer height, if printed as one large batch, a brim could be required.

All of the items are designed to be printed with a 0.4mm nozzle.

Model files

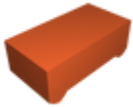
T3_tram		3 files
	t3_tam_shell.stl	
	t3_tam_chasis.stl	
	t3_tam_bogies.stl	
Old tram		3 files



old_tam_shell.stl



old_tram_chasis.stl



old_tram_bogie.stl

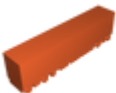


Subway

2 files



subway_shell.stl

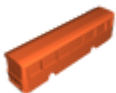


subway_chasis.stl



Bus

2 files



bus_shell.stl



bus_chasis.stl



Houses

3 files



house_1.stl



house_2.stl



house_3.stl

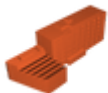


Hotels

6 files



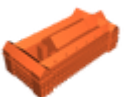
dancing_house.stl



prusa_lab.stl



municipal_house.stl



faculty_of_law.stl



kotva_shopping_house.stl



national_theatre.stl

License

This work is licensed under a
Creative Commons (4.0 International License)



Attribution-NonCommercial

-
- ✗ | Sharing without ATTRIBUTION
 - ✓ | Remix Culture allowed
 - ✗ | Commercial Use
 - ✗ | Free Cultural Works
 - ✗ | Meets Open Definition