

4WD buggy chassis Arduino

 **Phil M**

[VIEW IN BROWSER](#)

updated 1. 5. 2022 | published 1. 5. 2022

Summary

If you like my stuff please consider buying me a coffee <https://ko-fi.com/philm> 3D printable replacement chassis plate...

[Toys & Games](#) > [Other Toys & Games](#)

Tags: [chassis](#) [robotchassis](#) [4wdbuggy](#) [vehiclechassiskit](#)

If you like my stuff please consider buying me a coffee <https://ko-fi.com/philm>

3D printable replacement chassis plate for the popular 4WD Arduino robot/smart car

Includes a split version for printing on standard 200 X 200mm beds

To join, lightly sand the joint surfaces then apply super glue.

13-Oct-2020 Added motor mount plate in STP & STL format

Category: Mechanical Toys

Model files



buggy_chassis_orig_v4.dxf



4wd_smart_buggy_chassis_1piece.stl



buggy_chassis_w_servo_v4.dxf



4wd_smart_buggy_chassis_part_a.stl



motor_mount.step



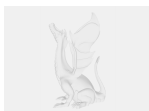
buggy_chassis_w_servo_rot_90_deg.dxf



4wd_smart_buggy_chassis_part_b.stl



motor_mount.stl



4wd_arduino_buggy_motor_mount_v1.dxf

[Find source .stl files on Thingiverse.com](https://www.thingiverse.com)

License

This work is licensed under a
Creative Commons (4.0 International License)



Attribution—Noncommercial—Share Alike

- ✗ | Sharing without ATTRIBUTION
- ✓ | Remix Culture allowed
- ✗ | Commercial Use
- ✗ | Free Cultural Works
- ✗ | Meets Open Definition