



## Easy Articulated Playmobil 2.0



**MadSoul3D**

[VIEW IN BROWSER](#)

updated 12. 5. 2022 | published 12. 5. 2022

### Summary

The improved version is here First version: <https://www.thingiverse.com/thing:1803509> Scale 1: 1. All parts can be...

---

[Toys & Games](#) > [Outdoor Toys](#)

---

The improved version is here

First version: <https://www.thingiverse.com/thing:1803509>

Scale 1: 1.

All parts can be assembled with genuine Playmobils and use their accessories.

Corrected the errors, now it is very easy to print

Hands can now rotate.

Completely to assemble.

Include two wigs, one can be printed face down and the other needs supports.

Including some extras.

Remix and share.

Enjoy it!

**Tips are welcome ;D**

Printing tips:

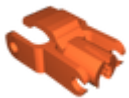
- Use supports with arms and hands.
- Layer height / Speed:
- Hands, arms and head 0.09mm and 40mm / s.
- Center piece, torso and legs 0.1-0.2mm / 60mm / s.
- Infill 100%

Category: Toys & Games

## Model files



**wig\_v2\_up.stl**



**skeletons\_v21.stl**



**arm\_v2.stl**



**hand\_v2.stl**



**wig\_v2.stl**



**body\_v2.stl**



**bald\_head.stl**



**legs\_with\_boots.stl**



**legs\_v2.stl**



**head\_v2.stl**



**arm\_v1.stl**



**legs\_v1.stl**

[Find source .stl files on Thingiverse.com](https://www.thingiverse.com)

## License ©

This work is licensed under a  
**Creative Commons (4.0 International License)**



**Attribution—Noncommercial—Share Alike**

- ✗ | Sharing without ATTRIBUTION
- ✓ | Remix Culture allowed
- ✗ | Commercial Use

- ✖ | Free Cultural Works
- ✖ | Meets Open Definition