



Wolfie: supports free wolf cub sculpt



Loubie3D

[VIEW IN BROWSER](#)

updated 12. 4. 2022 | published 10. 3. 2020

Summary

A sculpt that took a day and a half (from research, preliminary sketches and sculpting for multi and single extrusion...

[Art & Design](#) > [Sculptures](#)

Tags: [cute](#) [wolf](#) [nosupport](#) [wolfcubs](#)

A sculpt that took a day and a half (from research, preliminary sketches and sculpting for multi and single extrusion versions plus a test for single). I've included one of my sketches as I find having my ideas down in 2D form first really speeds things along.

Designed to print scaled up and down. This example was printed in Sirayatech Fast resin on my Prusa SL1 but this model will print well on and FDM machine too.

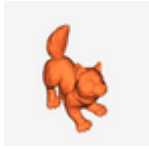
Multi extrusion version to follow.

Print instructions Category: Sculptures Print Settings

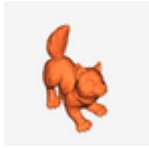
Rafts: No

Supports: No

Model files



loubie_wolfie_single_extrusion_scaled_up.stl



loubie_wolfie_single_extrusion.stl

[Find source .stl files on Thingiverse.com](https://www.thingiverse.com/thing/1111111)

License ©



This work is licensed under a
Creative Commons (4.0 International License)

Attribution—Noncommercial—No Derivatives

-
- ✖ | Sharing without ATTRIBUTION
 - ✖ | Remix Culture allowed
 - ✖ | Commercial Use
 - ✖ | Free Cultural Works
 - ✖ | Meets Open Definition