

pool fountain / waterfall

B Buzz

[VIEW IN BROWSER](#)

updated 11. 8. 2022 | published 11. 8. 2022

Summary

I updated the design of User oldfart to my needs. With different inserts for different spraying characteristics

[Household](#) > [Outdoor & Garden](#)

Tags: [fountain](#) [gardena](#) [hose](#) [intex](#) [pool](#) [water](#)
[waterfall](#)

I updated oldfart's idea to my needs:

- Gardena coupling (needs O-Ring for tighter fit)
- different inserts (140°, 80°, 20°)
- Clamp for pool rail (optional)

Clamp is designed for M6 square nut.
All parts print without support.
Add a drop of CA glue to fixate inserts

I added the SolidWorks and Step-files for easy remixing,

Have fun!

Sebastian

This remix is based on



Customizable Pool Fountain Aerator Nozzle for High Coverage

by oldfart

Model files



hose-connector.3mf



insert_20deg.sldprt



base.step



hose-connector.stl



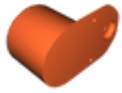
hose-connector.step



base.3mf



insert_20deg.3mf



base.stl



base.sldprt



insert_80deg.sldprt



insert_140deg.step



insert_140deg.3mf



insert_80deg.3mf



insert_140deg.sldprt



poolframeholder.stl



insert_20deg.stl



insert_80deg.stl



insert_20deg.step



insert_80deg.step



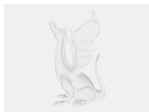
poolframeholder.step



insert_140deg.stl



poolframeholder.3mf



hose-connector.sldprt



poolframeholder.sldprt

License ©

This work is licensed under a
Creative Commons (4.0 International License)



Attribution-NonCommercial

- ✗ | Sharing without ATTRIBUTION
- ✓ | Remix Culture allowed
- ✗ | Commercial Use
- ✗ | Free Cultural Works
- ✗ | Meets Open Definition

