

Wemos D1 / DHT22 + BM180 logger housing

B Buzz

VIEW IN BROWSER

updated 8. 8. 2022 | published 8. 8. 2022

Summary

New version for less temperature difference due to ESP heating In this version a measure ca. 0.3°C difference between...

[Hobby & Makers](#) > [Electronics](#)

Tags: [bmp180](#) [dht11](#) [dht22](#) [esp8266](#) [thermometer](#)
[wemosd1mini](#)

New version for less temperature difference due to ESP heating

In this version a measure ca. 0.3°C difference between an open (breadboard) design and the D1 and the sensors in this housing.

In the old version it was around +6°C delta.

This is a remix from <https://www.thingiverse.com/thing:398515>

Additional space for a BMP 180 temperature / pressure sensor

Pro-Tip: use an 10k resistor as PullUp from 5V on the D2 pin when using the BMP180, otherwise the ESP will continuously restart.

Printable in PLA without supports.

You can probably do the cable soldering cleaner, it was just a quick mock up, sorry :)

As always, also the Solidworks and Step-Files, if you want to modify it.

Have fun,

Sebastian

Print Settings

Printer Brand:

Anycubic

Printer:

All-metal Mega

Rafts:

No

Supports:

No

Resolution:

0.2

Infill:

25

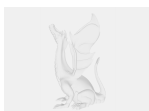
Filament: noname PLA white

Notes:

Any material does the trick.

Category: Electronics

Model files



wallmount_block.step



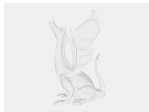
wallmount_block.sldprt



wallmount_block.stl



housingv3-1.stl



housingv3-1.step



housingv3-1.sldprt

[Find source .stl files on Thingiverse.com](#)

License ©

This work is licensed under a
Creative Commons (4.0 International License)



Attribution

- ✗ | Sharing without ATTRIBUTION
- ✓ | Remix Culture allowed
- ✓ | Commercial Use
- ✓ | Free Cultural Works
- ✓ | Meets Open Definition