

## cocktail / drink cooling plate for intex pool

B Buzz

[VIEW IN BROWSER](#)

updated 8. 8. 2022 | published 8. 8. 2022

### Summary

a cold plate for cooling drinks while you are enjoying the day in the pool....  
I made a plastik housing which clips...

[Household](#) > [Outdoor & Garden](#)

Tags: [cocktail](#) [intex](#) [intexpool](#) [pool](#) [summer](#)

a cold plate for cooling drinks while you are enjoying the day in the pool....

I made a plastik housing which clips onto the corner pieces of an intex-pool.

Add a metal (aluminium) plate on top, seal it tight with some glue and use cold water as coolant for the plate. I used my (otherwise unused) sping water from a small spring.

hose adapters for normal garden hoses.

works great if you have a cold water supply

### Print Settings

#### Printer Brand:

Anycubic

**Printer:**

All-metal Mega

**Rafts:**

No

**Supports:**

Yes

**Resolution:**

0,2

**Infill:**

25

**How I Designed This**

Solidworks Assembly and Step assembly attached, if you want to change it

Have Fun,

Cheers,

Sebastian

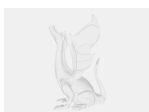
Category: Outdoor & Garden

**Model files**

**large\_display\_cooling\_plate\_255233.stl**



**cooling\_plate.sldprt**



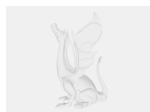
**hose\_adapter.sldprt**

---



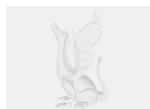
**cooling\_plate.stl**

---



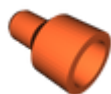
**drink-cooling-plate.step**

---



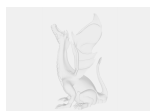
**hose\_adapter.step**

---



**hose\_adapter.stl**

---



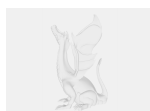
**cooling\_plate.step**

---



**drink-cooling-plate\_assembly.step**

---



**drink-cooling-plate.sldprt**

---



**drink-cooling-plate.stl**

[Find source .stl files on Thingiverse.com](#)

## License ©

This work is licensed under a  
**Creative Commons (4.0 International License)**



**Attribution-ShareAlike**

---

- ✖ | Sharing without ATTRIBUTION
- ✔ | Remix Culture allowed
- ✔ | Commercial Use
- ✔ | Free Cultural Works
- ✔ | Meets Open Definition