



[Laser Cut] ID-Card holder

 Paw85

[VIEW IN BROWSER](#)

updated 8. 8. 2022 | published 8. 8. 2022

Summary

A laser cut ID-Card holder

[Household](#) > [Office](#)

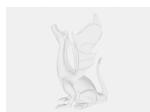
Tags: [holder](#) [idcard](#) [idcardholder](#) [leather](#) [leathercraft](#)
[leatherworking](#)

A laser cut ID-card holder.

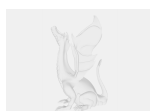
You can decide if you just want to laser cut and stitch it together, or spend the time to sandpaper and burnish the edges for a great finish.

Stitch holes made to fit #2 needle and 0.65 mm thread from WUTA.

Model files



korthallare_front_1-6.dxf



korthallare_back_1-6.dxf

License ©

This work is licensed under a
Creative Commons (4.0 International License)



Attribution—Noncommercial—No Derivatives

- ✗ | Sharing without ATTRIBUTION
- ✗ | Remix Culture allowed
- ✗ | Commercial Use
- ✗ | Free Cultural Works
- ✗ | Meets Open Definition