

1/2" PVC Pipe Clamping Mounting Block



JC Custom Designs

[VIEW IN BROWSER](#)

updated 29. 8. 2022 | published 29. 8. 2022

Summary

Quick adjustable block I made to hold some LED lights on PVC stands.

[Hobby & Makers](#) > [Other Ideas](#)

Tags: [accessory](#) [block](#) [box](#) [camera](#) [clamp](#) [garage](#)
[grow](#) [led](#) [light](#) [mount](#) [mounting](#) [painting](#) [pipe](#) [pvc](#)

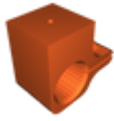
I made these 1/2" PVC pipe stands to hold some lights for painting cars. I needed a way to mount my 4' LED light bars to them so I came up with this design. It's a snug fit onto 1/2"

PVC but also has a screw to apply clamping pressure to secure w/e you hang.

The block was designed to use #8 Wood Screws 5/8" long. I used a torch to heat each screw a bit before threading them into the blocks. This allows the large wood screw threads to cut a very secure thread into the part.

I used these for 4' LED lights, but there is no reason you couldn't hang anything else from the mounting point. Please share your makes and uses if you find another application for these!

Model files



05in-pvc-pipe-mount-clamp.3mf



05in-pvc-pipe-mount-clamp.stl

License ©

This work is licensed under a
[Creative Commons \(4.0 International License\)](#)



Attribution-NonCommercial

-
- ✗ | Sharing without ATTRIBUTION
 - ✓ | Remix Culture allowed
 - ✗ | Commercial Use
 - ✗ | Free Cultural Works
 - ✗ | Meets Open Definition