



## InkBird ITC-106 Bezel



chris

[VIEW IN BROWSER](#)

updated 8. 8. 2022 | published 8. 8. 2022

### Summary

While in the process of building a standalone PID controller for a small Powdercoat oven. I cut the opening for the...

[Hobby & Makers](#) > [Tools](#)

Tags: [inkbird](#) [pid](#) [screenbezel](#)

While in the process of building a standalone PID controller for a small Powdercoat oven. I cut the opening for the InkBird ITC-106 a little too big.

So I designed this bezel to take care of that issue.

Bezel extends 5mm in all directions with a chamfer

### Print Settings

#### Printer Brand:

Creality

#### Printer:

Ender 3 Pro

#### Rafts:

No

**Supports:**

No

**Resolution:**

.2

**Infill:**

20

**Filament:** HATCHBOX PLA Black Post-Printing =====

Might need some filing to make it fit, I did enlarge the inside opening by .5mm all around. let me know if it is to far off

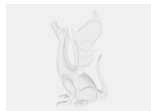
Category: Tools

## Model files



itx106\_bezel.obj

## Other files



itx106\_bezel.pdf

[Find source .stl files on Thingiverse.com](#)

## License ©

This work is licensed under a  
[Creative Commons \(4.0 International License\)](#)



## Attribution—Noncommercial—Share Alike

---

- ✗ | Sharing without ATTRIBUTION
- ✓ | Remix Culture allowed
- ✗ | Commercial Use
- ✗ | Free Cultural Works
- ✗ | Meets Open Definition