

30x30x30 mm cube



Boogie

[VIEW IN BROWSER](#)

updated 15. 3. 2020 | published 15. 3. 2020

Summary

30x30x30 mm cube



1.97 hrs



2 pcs



0.20 mm



0.40 mm



PLA
PET



20 g



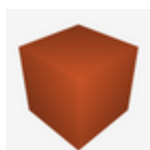
Prusa
MK3/S/S+

[3D Printers](#) > [Test Models](#)

Tags: [cube](#) [30](#)

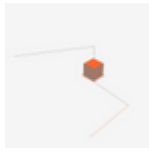
30x30x30 mm cube

Model files



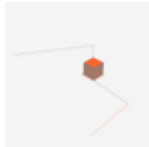
30mm_cube.stl

Print files



30mm_cube_02mm_petg_mk3s_59m.gcode

⚙ PET ⚙ 0.40 mm ⚙ 0.20 mm ⌚ 0.98 hrs ⚖ 10 g 🖨 Prusa MK3/S/S+



30mm_cube_02mm_pla_mk3s_59m.gcode

⚙ PLA ⚙ 0.40 mm ⚙ 0.20 mm ⌚ 0.99 hrs ⚖ 10 g 🖨 Prusa MK3/S/S+

License ©

This work is licensed under a
[Creative Commons \(4.0 International License\)](#)



Attribution—Noncommercial—Share Alike

- ✗ | Sharing without ATTRIBUTION
- ✓ | Remix Culture allowed
- ✗ | Commercial Use
- ✗ | Free Cultural Works
- ✗ | Meets Open Definition