



Customizable Handlebar Mount



samster395

[VIEW IN BROWSER](#)

updated 28. 1. 2024 | published 28. 1. 2024

Summary

I only needed the handle bar bit, also the other one took an extremely long time to process. Im using it to remake a...

[Sports & Outdoor](#) > [Outdoor Sports](#)

Tags: [thingiverse](#)

I only needed the handle bar bit, also the other one took an extremely long time to process.

Im using it to remake a lock holder but your can edit it into whatever you want, this just does the diameter for you.

There is a 22mm go pro mount in the files, in case thats what you needed.

Print Settings

Supports:

No

Resolution:

0.2

Infill:

25% - 100% (depends on the part / decide for yourself)

If you like this check out [my other OpenSCAD designs](#).

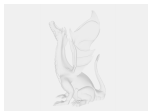
This remix is based on



Customizable Handlebar Mount

by [samster395](#)

Model files

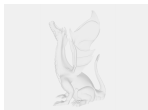


`handlebar_mount_cust.scad`



`22mm_handlebar_go_pro_mount.stl`

Other files



`sources.txt`

[Find source .stl files on Thingiverse.com](#)

License ©

This work is licensed under a
[Creative Commons \(4.0 International License\)](#)



Attribution

- ✗ | Sharing without ATTRIBUTION
- ✓ | Remix Culture allowed
- ✓ | Commercial Use
- ✓ | Free Cultural Works
- ✓ | Meets Open Definition