



## fly door roller



DennisP

[VIEW IN BROWSER](#)

updated 8. 8. 2022 | published 8. 8. 2022

## Summary

Old fly door roller broke, so here is a fix :)



1.54 hrs



1 pcs



0.15 mm



0.40 mm



PLA



10 g



Prusa  
MK3/S/S+

[Hobby & Makers](#) > [Other Ideas](#)

Tags: [door](#) [fix](#) [fly](#) [quick](#) [roller](#) [window](#)

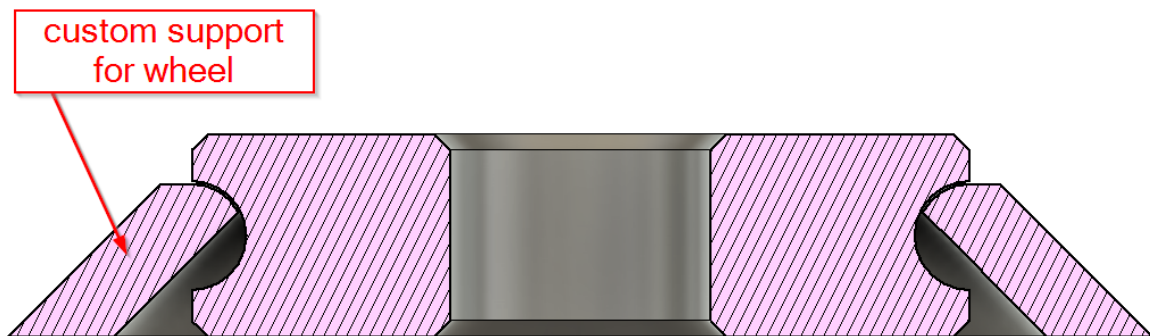
### Hardware:

- 1 X M3 nut
- 1 X M3x12 bolt

### Printing:

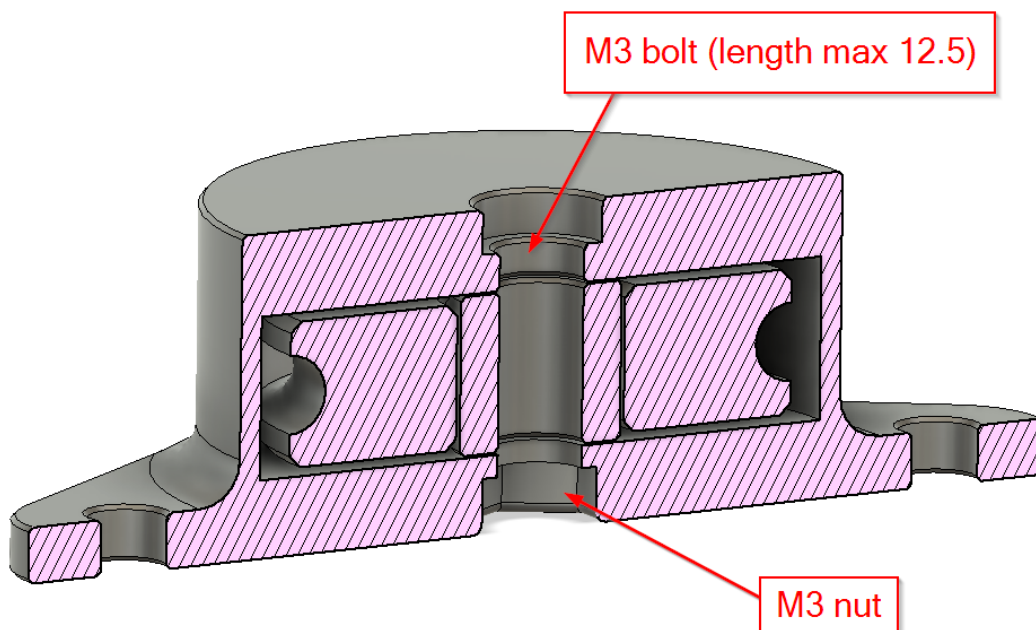
I printed mine in PLA (for test fitting purpose) but i guess something like ASA would be way better for the long run.

Everything can be printed without support except for the wheel, here i made some custom support wich u can use: (see attached 3MF file)



break this support carefully  
to get the wheel out after  
printing

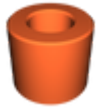
After printing you can assembly the roller with a M3 bolt and nut, the bolt cannot be longer than 12.5mm, otherwise its stiking out of the back.  
(mine whas 12mm long)



## Model files



housing.stl



axle.stl



support.stl



wheel.stl



fly\_door\_roller\_all\_parts.3mf

## Print files



fly\_door\_roller\_015mm\_pla\_mk3s\_1h32m.gcode

PLA 0.40 mm 0.15 mm 1.54 hrs 10 g Prusa MK3/S/S+

## License

This work is licensed under a  
[Creative Commons \(4.0 International License\)](https://creativecommons.org/licenses/by/4.0/)



## Attribution

---

- ✗ | Sharing without ATTRIBUTION
- ✓ | Remix Culture allowed
- ✓ | Commercial Use
- ✓ | Free Cultural Works
- ✓ | Meets Open Definition