

Einsy & Raspberry pi3B Box - Prusa I3MK3S



pilniczek

[VIEW IN BROWSER](#)

updated 12. 4. 2022 | published 15. 3. 2020

Summary

13.12.2019 UPDATE: Door issues Fixed! But still WIP now... BASIC INFO
*Multicolor Einsy box without the need to have MMU.

[3D Printers](#) > [3D Printers - Upgrades](#)

Tags: [prusa](#) [multicolor](#) [octoprint](#) [prusai3mk3](#) [raspberrypi](#)
[raspberrypicase](#) [einsy](#) [raspberrypi3](#) [octoprintcase](#)

13.12.2019 UPDATE: Door issues Fixed! But still WIP now...

BASIC INFO

***Multicolor** Einsy box **without** the need to have **MMU**.

- You can design your own box & doors patterns or make them changeable... (You do not need to glue it!)
- ASSEMBLY TIPS
- The smaller hinge should be on top.
 - Insert two nuts on the bottom of the body before you screw the body into the frame. (They become inaccessible.)
 - You have to hear two "CLICKs" when mounting the body to the frame screws. You have to push hard!

.20
15%

Print instructions

Category: 3D Printer Parts

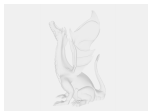
Model files



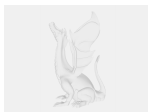
large_display_einsy-body_25568.stl



large_display_fill-body_25568.stl



large_display_fill-door-top_25568.stl



large_display_fill-door-bottom_25568.stl



large_display_small-part-hinge_25568.stl



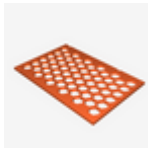
small-part-cable-big.stl



small-part-profile-nut.stl



fill-door-top.stl



fill-body.stl



einsy-door.stl



small-part-hinge.stl



fill-door-bottom.stl



einsy-body.stl



small-part-cable-small.stl

[Find source .stl files on Thingiverse.com](https://www.thingiverse.com)

License ©

This work is licensed under a
Creative Commons (4.0 International License)



Attribution

- ✗ | Sharing without ATTRIBUTION
- ✓ | Remix Culture allowed
- ✓ | Commercial Use

- ✓ | Free Cultural Works
- ✓ | Meets Open Definition