



## support for tomtom or phone

 jackknife1962

[VIEW IN BROWSER](#)

updated 9. 8. 2022 | published 9. 8. 2022

### Summary

support for tomtom xl, with module to use as an alternative also any type of mobile phone

[Gadgets](#) > [Portable Devices](#)

Tags: [bicycle](#) [bmw](#) [holder](#) [motorcycle](#) [phoneholder](#)  
[tomtom](#) [tomtommount](#)

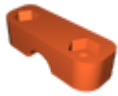
support for tomtom xl, with module to use as an alternative also any type of mobile phone, designed and printed for a friend with a Bmw GS motorcycle but I think it can also go for other motorcycles that have a tubular between 11 and 13 mm in diameter

The blue rectangles are simple tpu gaskets to avoid damaging the accessory bar where the support is mounted. You can replace them with simple rubber rectangles of about 0, 2 mm

Obviously, for the safety of the seal, 4 6x45 or 6x 40 round head bolts and relative hexagonal nuts are required, which are easily found in hardware stores or DIY stores.

I recommend a little glue or better superglue on the thread of "ball\_1" before screwing it on "hook" AFTER INSERTING "Screw\_r\_1" obviously. This post-assembly procedure makes it easy to print in split pieces.

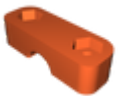
# Model files



**retro1.stl**



**phone\_clamp\_allarg-v1.stl**



**retro2.stl**



**tomtom\_moreno\_portacell\_componente1-v1.stl**



**aggancio.stl**



**tomtom\_moreno\_scatolato\_v5\_componente2-v1.stl**



**screw\_r-1-v1.stl**



**tightening\_screw-v1.stl**



**ball-1.stl**

# License

This work is licensed under a  
**Creative Commons (International License)**



## **Public Domain**

---

- ✓ | Sharing without ATTRIBUTION
- ✓ | Remix Culture allowed
- ✓ | Commercial Use
- ✓ | Free Cultural Works
- ✓ | Meets Open Definition