



## Simple Latch for cabinets/fridge/rvs/ etc

 AVieira

[VIEW IN BROWSER](#)

updated 15. 9. 2022 | published 15. 9. 2022

### Summary

Please read the disclaimer in the description and be smart/careful where and how you use this.

[Household](#) > [Kitchen](#)

Tags: [cabinet](#) [doorlatch](#) [fridge](#) [latch](#)

DISCLAIMER: Please beware of the safety concern this may cause. If you intend to use it in a fridge/freezer or any place where a kid/pet might get stuck and suffocate, this might not be the solution unless you can guarantee the safety of said kid/pet. I cannot be liable for any harm done by the misuse of this latch.

Read this: <https://www.goodhousekeeping.com/home/a32723/refrigerator-door-magnetic-today/>

After several robberies of my ham and cheese I decided to do this simple latch to stop my cat from opening the fridge.

This is placed on the fridge with double sided tape, not incredibly strong in my case, but if you intend to use this on RV fridges you may want to get some strong tape for long lasting.

Video of it in action: [https://www.reddit.com/r/functionalprint/comments/wjdq1i/my\\_cat\\_could\\_open\\_and\\_rob\\_the\\_fridge\\_well\\_not/](https://www.reddit.com/r/functionalprint/comments/wjdq1i/my_cat_could_open_and_rob_the_fridge_well_not/)

I mirrored the files for cabinets/fridges that open from the right.

Hardware needed:

- 1x M3x8 Bolt
- 1x M3 nut
- 1x Pen Spring (I used a 4.5mm diameter I had around, 4mm should work just fine.
- Loctite (optional but recommended on the nut, the bolt might start to uncrew with use)

- Double Sided Tape (recommended) / Hot Glue / glue of choice

You can find a template on the files, I used it as a guide to tape the latch.

Fixate the template with a small amount of double sided tape (there's a wall on the part meant to go inside the fridge gap and against the fixed wall (of the fridge) to align it properly) and then simply place the rest.

Remove the template after.

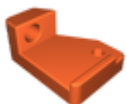
Or simply apply the tape to both latch parts and eyeball it on the cabinet/ fridge.

Have fun and be safe.

## Model files



**fixed\_latch.stl**



**door\_base.stl**



**template.stl**



**latch\_arm.stl**



**template\_r.stl**



**door\_base\_r.stl**



**fixed\_latch\_r.stl**



**latch\_arm\_r.stl**

## License



This work is licensed under a  
[Creative Commons \(4.0 International License\)](https://creativecommons.org/licenses/by-nc-sa/4.0/)

**Attribution—Noncommercial—Share Alike**

- 
- ✗ | Sharing without ATTRIBUTION
  - ✓ | Remix Culture allowed
  - ✗ | Commercial Use
  - ✗ | Free Cultural Works
  - ✗ | Meets Open Definition