



Nintendo Switch Pro Controller Stand



fletch.makers

[VIEW IN BROWSER](#)

updated 9. 8. 2022 | published 9. 8. 2022

Summary

A simple desk stand for the Nintendo Switch Pro Controller. Based on a remix.

[Hobby & Makers](#) > [Organizers](#)

Tags: [controller](#) [nintendoswitch](#) [organizer](#) [procontroller](#)
[stand](#) [videogame](#)

This is a remix of <https://www.printables.com/model/141662-nintendo-switch-pro-controller-dock-stand-with-gam/files> , but I just sliced off the bottom of the model (that attached to the Switch dock) and instead made the base a little wider to hold the controller on my desk.

Printed in black Overture PLA (1.75mm) on my Prusa Mini+. 0.2mm layer height, 0.4mm nozzle.

This remix is based on



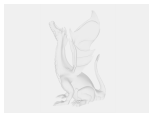
Nintendo Switch Pro Controller Dock Stand With Game Storage Slots

by Collingall

Model files



pro-controller-stand-v0.stl



pro-controller-stand.f3d

License ©

This work is licensed under a
[Creative Commons \(4.0 International License\)](#)



Attribution

-
- ✗ | Sharing without ATTRIBUTION
 - ✓ | Remix Culture allowed
 - ✓ | Commercial Use
 - ✓ | Free Cultural Works
 - ✓ | Meets Open Definition