



## Windowholder



Bene

[VIEW IN BROWSER](#)

updated 10. 8. 2022 | published 10. 8. 2022

### Summary

The windowholder keeps your window open. It clamps on a 2mm rail. the arm is turned 45 degrees and is 20 deg. movable.

[Household](#) > [Other House Equipment](#)

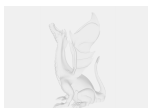
Prints without support. There are two versions of the Stl Right-Windowholder is for windows with the hinge right. You just need to gently stick a knife between both parts to make it move freely. I included the fusion 360 file so you can modify it. I would recommend to print it with PETG so it won't deform in the sun. Please note that it isn't designed to hold an window open at an 90d. angle.

### Model files

right-windowholder.stl



windowholder.f3d





left-windowholder.stl

## License ©

This work is licensed under a  
[Creative Commons \(4.0 International License\)](#)



**Attribution-NonCommercial**

---

- ✗ | Sharing without ATTRIBUTION
- ✓ | Remix Culture allowed
- ✗ | Commercial Use
- ✗ | Free Cultural Works
- ✗ | Meets Open Definition