



Fastener for 12mm steel bar (towel rack)

T The occasional extrusionist

[VIEW IN BROWSER](#)

updated 17. 2. 2023 | published 17. 2. 2023

Summary

To fasten 12mm pipe/rod/bar under a bench/table

[Household](#) > [Other House Equipment](#)

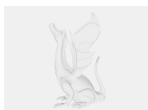
Made this to fasten 12mm, 60cm long stainless steel rod under the bench in the washing room. Used as towel rack.

Model files



12mm_bar.stl

☐ Print this + one mirrored version



12mm_bar.fcstd

☐ FreeCAD model file

License ©

This work is licensed under a
Creative Commons (4.0 International License)



Attribution

- ✗ | Sharing without ATTRIBUTION
- ✓ | Remix Culture allowed
- ✓ | Commercial Use
- ✓ | Free Cultural Works
- ✓ | Meets Open Definition