

Tap Handles - Fusion 360



ECF

[VIEW IN BROWSER](#)

updated 5. 2. 2023 | published 5. 2. 2023

Summary

I use M3, M4 and M5 taps often for chasing modeled threads in printed parts. After looking at many of the tap...

[Hobby & Makers](#) > [Tools](#)

Tags: [360](#) [fusion](#) [tap](#) [thingiverse](#) [f360](#) [handls](#)

I use M3, M4 and M5 taps often for chasing modeled threads in printed parts. After looking at many of the tap handles/wrenches already available on this site, I decided to create my own design using Fusion 360 (CAD files included). These work very well for the intended purpose and will be used frequently in my work with 3D printed parts.

I can't really say these are a remix/make of any particular design as I took from several existing models of both tap wrenches and water bottle openers.

For those familiar with Fusion 360, user parameters are used for almost all dimensions and there is a shrinkage factor added to each tool dimension. This may need to be adjusted for the material you use. I made mine out of PLA and .27mm seemed to provide the desired fit for the taps I normally use.

Print Settings

Printer:

Railcore II 300XL

Rafts:

No

Supports:

No

Resolution:

.20

Infill:

20%

Filament:

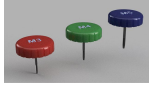
Zyltech PLA How I Designed This =====

Designed using Fusion 360 and sliced using PrusaSlicer 2.4.0. User parameters used to control most dimensions.

| Parameters | | | | | |
|------------------------|---------------------|------|-------------------|-------|----------|
| Parameter | Name | Unit | Expression | Value | Comments |
| ▼ Favorites | | | | | |
| ★ Diameter Dimension-3 | d43 | mm | 26.75 mm | 26.75 | |
| ★ Diameter Dimension-2 | d3 | mm | 29.75 mm | 29.75 | |
| ▼ User Parameters | | | | | |
| ☆ User Parameter | HandleOutsideDia... | mm | 65 mm | 65.00 | |
| ☆ User Parameter | M3Tap | mm | 2.78 mm + 0.27 mm | 3.05 | |
| ☆ User Parameter | HandleDepth | mm | 16 mm | 16.00 | |
| ☆ User Parameter | M4Tap | mm | 3.3 mm + 0.27 mm | 3.57 | |
| ☆ User Parameter | M5Tap | mm | 4.15 mm + 0.26 mm | 4.41 | |
| ☆ User Parameter | M3ToolDepth | mm | 5.5 mm | 5.50 | |
| ☆ User Parameter | M4ToolDepth | mm | 7 mm | 7.00 | |
| ☆ User Parameter | M5ToolDepth | mm | 8 mm | 8.00 | |
| ▼ Model Parameters | | | | | |
| ★ Diameter Dimension-3 | d43 | mm | 26.75 mm | 26.75 | |
| ★ Diameter Dimension-2 | d3 | mm | 29.75 mm | 29.75 | |
| ★ Diameter Dimension-4 | d70 | mm | 55 mm | 55.00 | |
| > Tap Handles v5 | | | | | |
| > M3 Tap Handle | | | | | |

Category: Tool Holders & Boxes

This remix is based on



M3, M4, M5 and M6 Tap Handles

by HDVideo

Model files



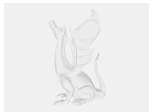
m4_tap_handle.stl



m4_tap_handle.step



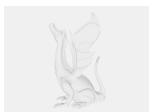
m5_tap_handle.stl



m5_tap_handle.step



m3_tap_handle.stl



m3_tap_handle.step



tap_handles_v6.f3d

[Find source .stl files on Thingiverse.com](#)

License

This work is licensed under a
Creative Commons (4.0 International License)



Attribution—Noncommercial—Share Alike

- ✗ | Sharing without ATTRIBUTION
- ✓ | Remix Culture allowed
- ✗ | Commercial Use
- ✗ | Free Cultural Works
- ✗ | Meets Open Definition