



End cap for wood slat



t0b1

[VIEW IN BROWSER](#)

updated 17. 8. 2022 | published 17. 8. 2022

Summary

This thing protects against splinters.



0.36 hrs



1 pcs



0.30 mm



0.40 mm



PET



7 g



Prusa
MK3/S/S+

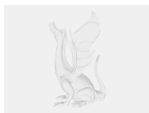
[Household](#) > [Pets](#)

Tags: [cattree](#)

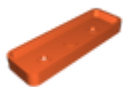
We used the wood of an old IKEA Sultanlade slat frame to build a cat ladder. This thing protects against splinters. OpenSCAD file included for your adjustments.



Model files



sultanlade-cap.scad



sultanlade-cap.stl

Print files



sultanlade-cap_03mm_petg_mk3s_22m.gcode

⚙ PET ⚙ 0.40 mm ⚙ 0.30 mm ⌚ 0.36 hrs ⚖ 7 g 🖨 Prusa MK3/S/S+

📄 Quick PETG print, good enough for me

License ©

This work is licensed under a
Creative Commons (4.0 International License)



Attribution

- ✗ | Sharing without ATTRIBUTION
- ✓ | Remix Culture allowed
- ✓ | Commercial Use
- ✓ | Free Cultural Works
- ✓ | Meets Open Definition