



Wireless Phone Charger Base - Fusion 360



ECF

[VIEW IN BROWSER](#)

updated 21. 10. 2023 | published 21. 10. 2023

Summary

Remix of wireless charger base by markwtech to fit a Samsung S10 phone. Legs were added so the base could be mounted...

[Hobby & Makers](#) > [Electronics](#)

Tags: [fusion360](#) [wirelesscharger](#) [jeep](#) [thingiverse](#) [yootech](#)
[f360](#) [grandcherokee](#) [grandcherokeeel](#)

Remix of wireless charger base by markwtech to fit a Samsung S10 phone. Legs were added so the base could be mounted in a 2022 Jeep Grand Cherokee. I discovered that the in-car USB ports did not supply enough amps for the Yootech charger to function as designed (LED ring constantly blinks), so used an adapter in the Aux Power port which solved the problem. The legs are attached using 10mm M3 socket head cap screws and M3 brass inserts. Fusion 360 model included with parameters to change some of the dimensions.

Update 10/21/23 - The base never fit just right in the Jeep so I finally got around to fixing it.

Many thanks to <https://www.thingiverse.com/markwtech/designs> for providing his Fusion 360 file!

Category: Electronics

This remix is based on



Jeep WL Wireless Charger Base

by HDVideo



Jeep WL Wireless Charger Base

by HDVideo



Jeep WL Wireless Charger Base

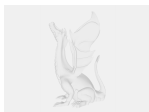
by HDVideo



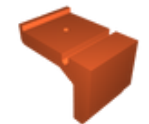
Jeep WL Wireless Charger Base

by HDVideo

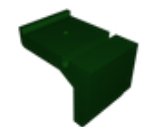
Model files



s10_charger_base-v2-v8.step



wireless-charger-base-leg.stl



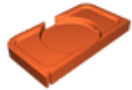
wireless-charger-base-leg.3mf



wireless-charger-base-1.3mf



s10_charger_base-v2-v8.f3d



wireless-charger-base-1.stl

[Find source .stl files on Thingiverse.com](#)

License ©

This work is licensed under a
[Creative Commons \(4.0 International License\)](#)



Attribution-NonCommercial

-
- ✗ | Sharing without ATTRIBUTION
 - ✓ | Remix Culture allowed
 - ✗ | Commercial Use
 - ✗ | Free Cultural Works
 - ✗ | Meets Open Definition