



Modified Bottle Opener with Magnet - Fusion 360



ECF

[VIEW IN BROWSER](#)

updated 5. 2. 2023 | published 5. 2. 2023

Summary

Remixed to add a 10x5mm magnet and use an M5x10 flat washer for the opener.

[Household](#) > [Kitchen](#)

Tags: [fusion360](#) [bottleopener](#) [thingiverse](#) [beeropener](#)
[twistoff](#) [f360](#)

This Thing was remixed to add a 10x5mm magnet and use an M5x10 flat washer for the opener. I also increased the thickness a bit to better accommodate the larger diameter magnet and modified the bottle cap area to better fit my beer of choice. After working with the step file provided by Dyason (thanks for that), I ended up redrawing the part from scratch in Fusion 360 since I sometimes find that easier than working with original files from other CAD software. Fusion 360 file included.

Files updated 3/27/2022

Print Settings

Printer:

Railcore II 300XL

Rafts:

No

Supports:

No

Resolution:

.20

Infill:

15%

Filament:

Zyltech PETG

Blue

Category: Kitchen & Dining

This remix is based on



Modified Bottle Opener with Magnet

by HDVideo

Model files



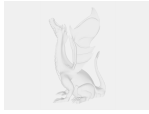
modified_bottle_opener_with_magnet.stl



modified_bottle_opener_with_magnet.3mf



modified_bottle_opener_with_magnet.f3d



modified_bottle_opener_with_magnet.step

[Find source .stl files on Thingiverse.com](#)

License

This work is licensed under a
Creative Commons (4.0 International License)



Attribution-NonCommercial

-
- ✗ | Sharing without ATTRIBUTION
 - ✓ | Remix Culture allowed
 - ✗ | Commercial Use
 - ✗ | Free Cultural Works
 - ✗ | Meets Open Definition