

Philips HTS3565 Satellite Speaker Wall/Ceiling Mount (Beta)

B BFeely

[VIEW IN BROWSER](#)

updated 9. 8. 2022 | published 9. 8. 2022

Summary

Wall and ceiling mounts for the satellite speakers for the Philips HTS3565D/37 DVD Home Theater System. Currently in...

[Gadgets](#) > [Audio](#)

Wall and ceiling mounts for the satellite speakers for the Philips HTS3565D/37 DVD Home Theater System.

Currently in beta, the ceiling mounts haven't been tested yet and there is no center speaker mount yet.

Ceiling mounts are designed to throw sound downwards, which I used because there is no wall behind my couch to mount the rear speakers on.

M10 Nut and bolt created with a modified version of the library at <https://github.com/gabfv/scad-metric-thread-library>, the screw generated with a STL generated from the library of a threaded rod, with the head added via FreeCAD.

Body of the mounts created in FreeCAD.

FreeCAD files supplied where applicable.

Print 2 copies of each part. Supports needed for the peg on both wall and ceiling mount, and for part 2 of the ceiling mount. Do not use supports on the nut or bolt.

Tolerance test model supplied to check the fit of the ceiling mount parts.

All parts already aligned to the bed.

Requires a 200mm print bed to fit.

Screw model has a couple holes but appears to slice properly in Cura.

Update 3/12/2020:

Added alternate nail pattern for ceiling mount to better match my ceiling joists. Added missing wall mount .stl model.

Print Settings

Printer:

Modded HE3D EI3

Rafts:

No

Supports:

Yes

Resolution:

0.15-0.2mm

Infill:

25%

Filament:

Hatchbox PLA

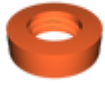
Black

Notes:

Use no supports on nut and bolt.

Category: Audio

Model files



philips_speaker_ceiling_mount_nut.stl



philips_speaker_wall_mount.fcstd



philips_speaker_ceiling_mount_1.fcstd



philips_speaker_ceiling_mount_2.stl



philips_speaker_ceiling_mount_screw.stl



philips_speaker_wall_mount.stl



philips_speaker_ceiling_mount_2_tolerance_test.fcstd



philips_speaker_ceiling_mount_2_tolerance_test.stl



philips_speaker_ceiling_mount_2.fcstd



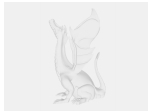
philips_speaker_ceiling_mount_2_alternate_nails.fcstd



philips_speaker_ceiling_mount_2_alternate_nails.stl



philips_speaker_ceiling_mount_1.stl



philips_speaker_ceiling_mount_screw.fcstd

[Find source .stl files on Thingiverse.com](#)

License ©

This work is licensed under a
[Creative Commons \(4.0 International License\)](#)



Attribution

-
- ✗ | Sharing without ATTRIBUTION
 - ✓ | Remix Culture allowed
 - ✓ | Commercial Use
 - ✓ | Free Cultural Works
 - ✓ | Meets Open Definition