

Filament runout ender 3 mount



LauxLead

[VIEW IN BROWSER](#)

updated 10. 8. 2022 | published 10. 8. 2022

Summary

A mount to match my BMG clone extruder and a side spool holder in my Ender 3

[3D Printers](#) > [3D Printers - Upgrades](#)

Tags: [crealityender3](#) [ender3](#) [filamentsensor](#)
[filamentsensormount](#)

A remix from a Thingiverse model () changed to support a generic filament run-out sensor in my Ender 3 with a BMG clone extruder.

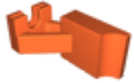
This remix is based on



Filament Runout Sensor Holder

by NDS Maker

Model files



support-filament-runout-with-bmg-like-extruder-v3.stl

License

This work is licensed under a
[Creative Commons \(4.0 International License\)](#)



Attribution

- ✗ | Sharing without ATTRIBUTION
- ✓ | Remix Culture allowed
- ✓ | Commercial Use
- ✓ | Free Cultural Works
- ✓ | Meets Open Definition