

KP3S plywood laser cut housing

f fmMike

[VIEW IN BROWSER](#)

updated 10. 8. 2022 | published 10. 8. 2022

Summary

Laser cut housing for the Kingoon KP3S with power supply replacement. Used 3mm plywood to cut all the parts - should...

[3D Printers](#) > [Accessories](#)

Tags: [housing](#) [kingroon](#) [kingroonkp3](#) [kingroonkp3s](#) [kp3s](#)
[plywood](#) [raspberrypihousing](#)

Laser cut housing for the Kingoon KP3S with power supply replacement.

Used **3mm plywood** to cut all the parts - should fit on a K40 laser (or larger), but not as "1 shot" (separation required)

DXF contains all segments with cut-outs for power switch and screw holes for the replacement power supply (24V, fanless from [Amazon](#)) and SD card extension cable to avoid handling with the microSD stuff

Fusion360 file attached for adjustment of power supply screws or holes in case you're using different size / thickness of material

Surely not perfect, but suits my needs and works since 3 month without any issues.

Print Settings

Printer:

Laser Cutter

Rafts:

No

Supports:

No

Resolution:

.

Infill:

.

Filament:

. Plywood 3mm

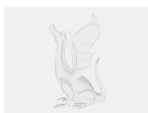
.

Notes:

Actually, nothing to print - you need to laser cut all components and glue them together

Category: 3D Printer Accessories

Model files



housing_kingroon_v6.f3d



kingroon_housing_3mm_plywood.dxf

[Find source .stl files on Thingiverse.com](https://www.thingiverse.com/thing/1111111)

License ©

This work is licensed under a
Creative Commons (4.0 International License)



Attribution

- ✗ | Sharing without ATTRIBUTION
- ✓ | Remix Culture allowed
- ✓ | Commercial Use
- ✓ | Free Cultural Works
- ✓ | Meets Open Definition