

Alfawise U30pro Extension Feet

f fmMike

[VIEW IN BROWSER](#)

updated 5. 12. 2022 | published 5. 12. 2022

Summary

Modified the cooling fan on my Alfawise U30pro to get some air around the stepper motors when printing ABS, PC-ABS or...

[3D Printers](#) > [Accessories](#)

Tags: [feet](#) [extension](#) [alfawiseu30](#) [u30pro](#)

Modified the cooling fan on my Alfawise U30pro to get some air around the stepper motors when printing ABS, PC-ABS or Nylon, so the housing was removed and a 60x20mm fan was added.

Unfortunately, the fan exceeded the total height the feet were capable to handle, so an extension was necessary...

Print 4 of them (used PTFE with 5% in the first 23mm and 20% for the rest in S3D using processes) - one for each feet and you're done!

Adding approx. 25mm to the overall height

Print Settings

Printer:

Alfawise U30pro

Rafts:

No

Supports:

No

Resolution:

0,2mm layer height

Infill:

5% + 20%

Filament:

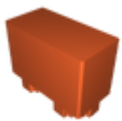
Nothing special... PTFE Post-Printing =====

Mounting

remove the original black caps on each feet and press the printed feet in place - the design is done to have a certain amount of friction when applied to avoid dropping out when moved.

That's it! Category: 3D Printer Accessories

Model files



u30pro_feet.stl

[Find source .stl files on Thingiverse.com](#)

License ©

This work is licensed under a
[Creative Commons \(4.0 International License\)](#)



Attribution

- ✗ | Sharing without ATTRIBUTION
- ✓ | Remix Culture allowed
- ✓ | Commercial Use
- ✓ | Free Cultural Works
- ✓ | Meets Open Definition