

Pen box - a bit parametric



MartasSan

[VIEW IN BROWSER](#)

updated 10. 8. 2022 | published 10. 8. 2022

Summary

Designed up this dealer button to use in home games or have just as something laying around for any poker fan. It was...

[Household](#) > [Office](#)

Tags: [box](#) [gift](#) [penholder](#)

Designed up this dealer button to use in home games or have just as something laying around for any poker fan. It was inspired by a dealer button in Pokerstars VR.

Printing:

Ring - Infil to add weight, supports needed for spade inset. Letter embossing doesn't need it.

Spade - Infil to add weight, no supports

Letters - Print flat, already scaled to fit nicely in the embossing

Star - Infil to add weight.

Full print with 4x4x4 walls/top/bottom and 38% infil came to about 48g in weight.

Glue in lettering and spade. Star may need minor sanding but should push fit into the space tightly and not need anything else to secure it.

Print Settings

Printer Brand:

Creality

Printer:

Ender 3

Rafts:

No

Supports:

No

Resolution:

200

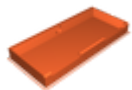
Infill:

10

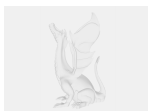
Filament: Sunlu Silk PLA+

Category: Office

Model files



box-top.stl



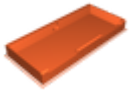
3pen-box.fcstd



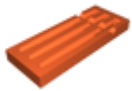
box-hinge.stl



box-letters.stl



box-bottom.stl



box-cut.stl

[Find source .stl files on Thingiverse.com](https://www.thingiverse.com/thing:1111111)

License ©

This work is licensed under a
Creative Commons (4.0 International License)



Attribution

- ✗ | Sharing without ATTRIBUTION
- ✓ | Remix Culture allowed
- ✓ | Commercial Use
- ✓ | Free Cultural Works
- ✓ | Meets Open Definition