

Ender-5 Plus Enhancements



davorin

[VIEW IN BROWSER](#)

updated 15. 8. 2022 | published 15. 8. 2022

Summary

Some enhancements I did for the Ender-5 Plus upgrade to direct drive extruder.

[3D Printers](#) > [3D Printers - Upgrades](#)

Tags: [creality](#) [ender5plus](#)

Some parts I did for enhancing my Ender-5 Plus when doing the direct drive upgrade.

Cable guide

A fixation for the extruder cables. Needs a M3 x 6 counter sunk screw.

Z-screw fixation

The Z-screw holders need four M4 * 10 countersunk screws and four hammer nuts to go into the V-slots. I updated the design to add a space of 1mm from bottom to the ball-bearing as when the printing bed is at the top position it would push the holder up as Creality wanted to save every inch of the z-screw length (o;

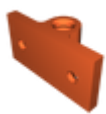
Filament tube holder

As I didn't liked the supplied filament tube holder in the Micro Swiss direct drive kit I decided to quickly do my own as I wanted to lay out the extruder cables at another spot.

Took some trials and errors in the Shapr3D design to finally made it fit (o;

More to come....

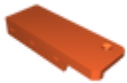
Model files



filament-tube-mount.stl



ender-5-z-screw-fixation.stl



ender-5-cable-guide.stl

License ©

This work is licensed under a
[Creative Commons \(4.0 International License\)](https://creativecommons.org/licenses/by-nc/4.0/)



Attribution-NonCommercial

- ✗ | Sharing without ATTRIBUTION
- ✓ | Remix Culture allowed
- ✗ | Commercial Use
- ✗ | Free Cultural Works
- ✗ | Meets Open Definition

