



Heart goggles prop



Mat

[VIEW IN BROWSER](#)

updated 10. 8. 2022 | published 10. 8. 2022

Summary

Heart goggles you can use in your photo booth



1.01 hrs



1 pcs



0.20 mm



0.40 mm



PLA



11 g



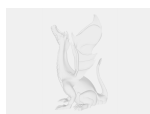
Prusa
MK3/S/S+

[Costumes & Accessories](#) > [Props](#)

Tags: [glasses](#) [photobooth](#) [photobox](#) [wedding](#)

The model is intended to be sliced with 0.2mm layer height. This way, you can use manual filament swaps to achieve the multiple colors.

Model files



glasses.f3d



heart.3mf

Print files



heart_02mm_pla_mk3s_1h1m.gcode

PLA 0.40 mm 0.20 mm 1.01 hrs 11 g Prusa MK3/S/S+

License

This work is licensed under a
[Creative Commons \(International License\)](#)



Public Domain

-
- ✓ | Sharing without ATTRIBUTION
 - ✓ | Remix Culture allowed
 - ✓ | Commercial Use
 - ✓ | Free Cultural Works
 - ✓ | Meets Open Definition