

7 Foot Pixel Arch - Pixel

 **David**

[VIEW IN BROWSER](#)

updated 10. 8. 2022 | published 10. 8. 2022

Summary

This is a Heavy Duty mounting bracket for LED Holiday Arch. The Arch is angled to support at 10 Foot 2" HDPE Tube 7 to...

[Hobby & Makers](#) > [Other Ideas](#)

Tags: [christmas](#) [pixels](#) [ws2811](#)

This is a Heavy Duty mounting bracket for LED Holiday Arch. The Arch is angled to support at 10 Foot 2" HDPE Tube 7 to 8 feet across. Can be used with LED Bullet Pixel or Strips.

Materials needed:

2 - 10' HDPE Tubes with 2" OD, 1.75" ID

4 - 25MM M6 Bolts

4 - M6 Nuts

1 - 7or 8' 1/2" EMT Tube

2 - M5 Nuts

2 80MM M5 Bolts

To Assemble:

1. Insert 4 nuts into the internal nut holders
2. Insert tube into the mounting bracket
3. Use drill with 5MM bit to drill hole through tube thru the 4 holes.
4. Tighten the bolts together, not one at a time (or you will risk cracking the inner part of the apparatus.
5. Drill 2 holes in the EMT tube 3/4 inch from each end.
6. Attach the cross support on both ends
7. Repeat steps 1-4 for the bracket on the other end.

Insert the HDPE tube into 1 mount. Use a drill through the 4 mounting holes

Print Settings

Printer Brand:

Prusa

Printer:

I3 MK3S

Rafts:

No

Supports:

No

Resolution:

200

Infill:

40

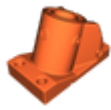
Filament: Any PETG Any

Notes:

This can be printed with a 0.8 Nozzle. Slized with 40% Infill & Gyroid pattern..

Category: DIY

Model files



archmountv3.stl

[Find source .stl files on Thingiverse.com](#)

License ©

This work is licensed under a
Creative Commons (4.0 International License)



Attribution

- ✗ | Sharing without ATTRIBUTION
- ✓ | Remix Culture allowed
- ✓ | Commercial Use
- ✓ | Free Cultural Works
- ✓ | Meets Open Definition